

(BELVU4.BELVU) 18256

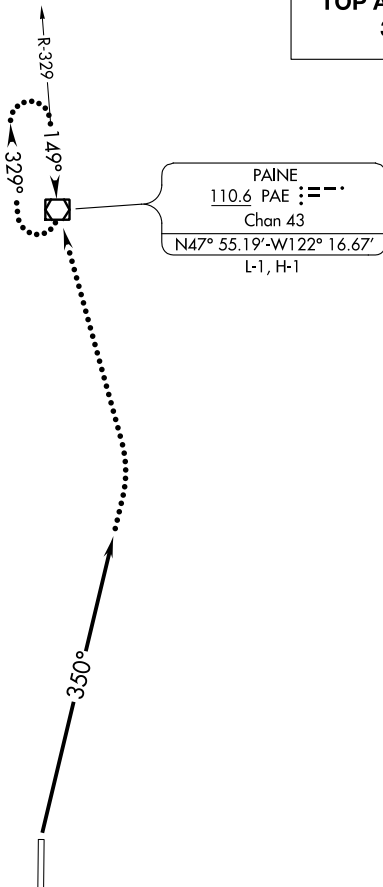
BELLEVUE FOUR DEPARTURE

AL-5396 (FAA)

RENTON MUNI (RNT)
RENTON, WASHINGTON

ATIS
126.95
GND CON
121.6 256.9
RENTON TOWER *
124.7 256.9
SEATTLE DEP CON
119.2 284.7

**TOP ALTITUDE:
3000**



NOTE: RADAR required.

TAKEOFF MINIMUMS

Rwy 16: NA- ATC.

Rwy 34: Standard with minimum climb of 330' per NM to 2700.

NOTE: Chart not to scale.



DEPARTURE ROUTE DESCRIPTION

TAKEOFF RUNWAY 34: Climb heading 350°, maintain 3000, for RADAR vectors, expect filed altitude within 5 minutes after departure.

LOST COMMUNICATIONS: If no contact with Seattle Departure Control within 3 minutes after departure, climbing left turn direct PAE VOR/DME, continue climb-in PAE VOR/DME holding pattern to cross PAE VOR/DME at or above MEA/MCA for direction of flight.

BELLEVUE FOUR DEPARTURE

(BELVU4.BELVU) 13SEP18

RENTON, WASHINGTON
RENTON MUNI (RNT)

NW-1, 10 OCT 2019 to 07 NOV 2019

NW-1, 10 OCT 2019 to 07 NOV 2019