

(RENTN3.RENTN) 17341

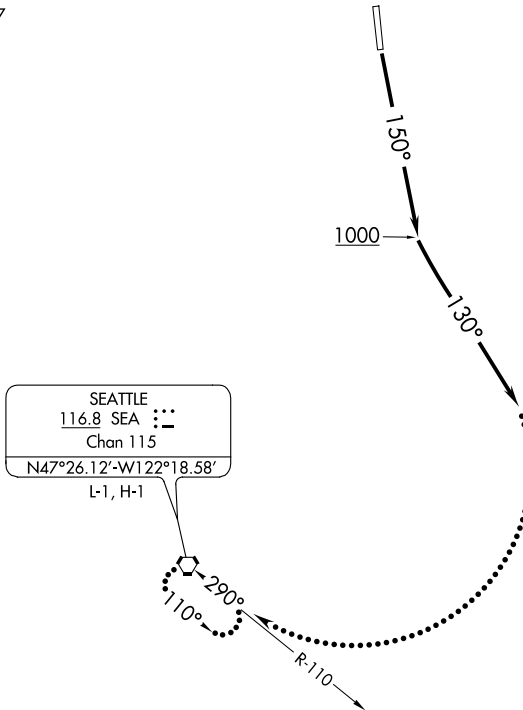
# RENTN THREE DEPARTURE

AL-5396 (FAA)

RENTON MUNI (RNT)  
RENTON, WASHINGTON

ATIS 126.95  
GND CON  
121.6 256.9  
RENTON TOWER ★  
124.7 (CTAF) 256.9  
SEATTLE DEP CON  
119.2 284.7

**TOP ALTITUDE:  
3000**



NOTE: RADAR required.

### TAKEOFF MINIMUMS

Rwy 16: Standard with a minimum climb of 405' per NM to 800.  
Rwy 34: NA- ATC.

NOTE: Chart not to scale.



### DEPARTURE ROUTE DESCRIPTION

TAKEOFF RUNWAY 16: Climb heading 150° to 1000, then climbing left turn heading 130°, expect RADAR vectors, maintain 3000, expect filed altitude within 5 minutes after departure.

LOST COMMUNICATIONS: If no contact with Seattle Departure Control within 3 minutes after departure, climbing right turn direct SEA VORTAC, continue climb-in SEA VORTAC holding pattern to cross SEA VORTAC at or above MEA/MCA for direction of flight before proceeding on course.

# RENTN THREE DEPARTURE

(RENTN3.RENTN) 21JUL16

RENTON, WASHINGTON  
RENTON MUNI (RNT)

NW-1, 10 OCT 2019 to 07 NOV 2019

NW-1, 10 OCT 2019 to 07 NOV 2019