

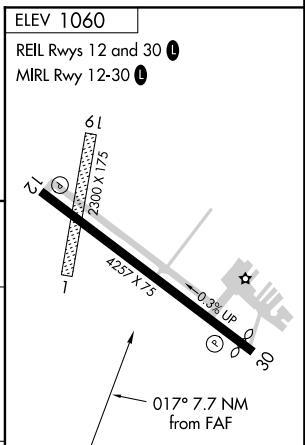
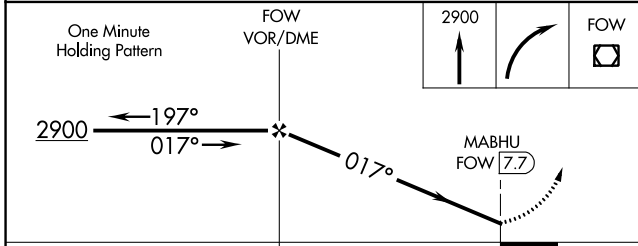
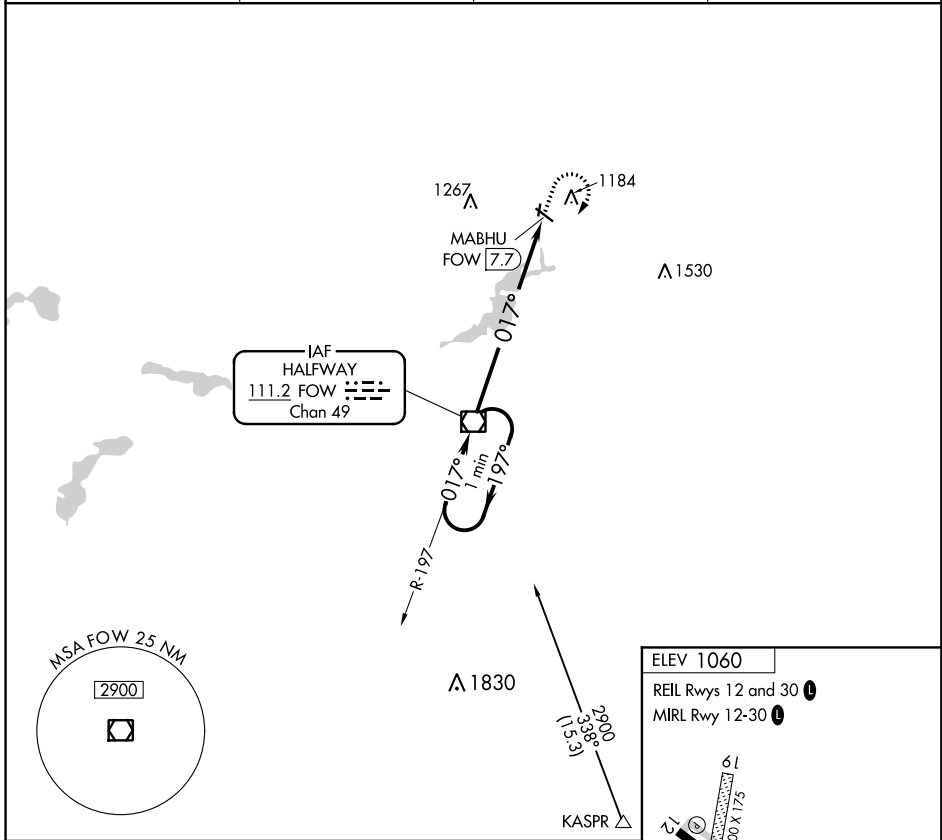
VOR/DME FOW 111.2 Chan 49	APP CRS 017°	Rwy Idg TDZE Apt Elev N/A N/A 1060
---	------------------------	--

VOR-A

FARIBAULT MUNI-LIZ WALL STROHFUS FIELD (F'BL)

<p>NA</p> <p>When local altimeter setting not received, use Owatonna altimeter setting and increase all MDA 60 feet, and Cat C visibility ¼ mile. Circling to Rwy 1, 19 NA.</p>	<p>MISSED APPROACH: Climb to 2900 then right turn direct FOW VOR/DME and hold.</p>
--	--

AWOS-3 111.2	MINNEAPOLIS APP CON 134.7 284.7	GCO 121.725	UNICOM 122.8 (CTAF)
------------------------	---	-----------------------	-------------------------------



CATEGORY	A	B	C	D	FAF to MAP 7.7 NM					
CIRCLING	1680-1	620 (700-1)	1680-1¼ 620 (700-1¼)	NA	Knots	60	90	120	150	180
					Min:Sec	7:42	5:08	3:51	3:05	2:34

NC-1, 10 OCT 2019 to 07 NOV 2019

NC-1, 10 OCT 2019 to 07 NOV 2019