

WAAS CH <b>61214</b> <b>W11A</b>	APP CRS <b>110°</b>	Rwy Idg <b>4599</b> TDZE <b>1729</b> Apt Elev <b>1729</b>
--	------------------------	---

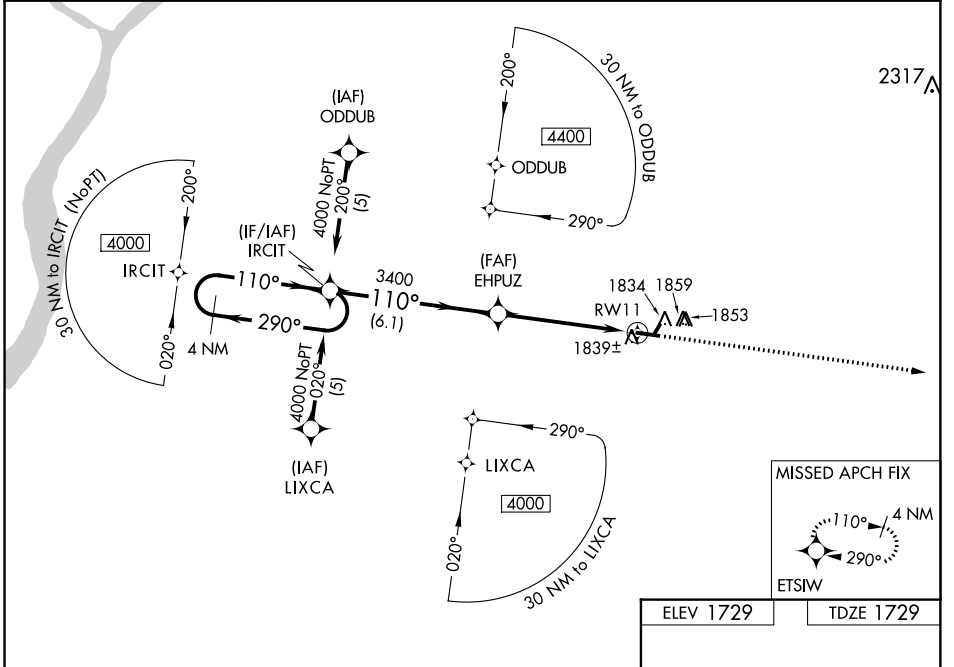
# RNAV (GPS) RWY 11

SCHUYLKILL COUNTY/JOE ZERBEY (Z·ER)

**NA** Baro-VNAV NA when using Selinsgrove altimeter setting. For uncompensated Baro-VNAV systems, LNAV/VNAV NA below -18°C (0°F) or above 45°C (113°F). DME/DME RNP-0.3 NA. When local altimeter setting not received, use Selinsgrove altimeter setting and increase all DA 261 feet and all MDA 280 feet. Increase LPV and LNAV/VNAV all Cats visibility 1 mile, increase LNAV Cat B ¼ mile and Cat C and Cat D 1 mile, and increase circling Cat B ¼ mile and Cat C and Cat D ¾ mile. VDP NA when using Selinsgrove altimeter setting. Circling NA to Rwy 4 and 22.

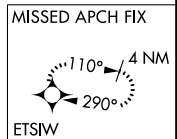
**MISSED APPROACH:**  
Climb to 4000 direct ETSIW and hold.

AWOS-3 <b>127.575</b>	HARRISBURG APP CON <b>118.25 269.45</b>	UNICOM <b>123.075 (CTAF) 0</b>
--------------------------	--	-----------------------------------

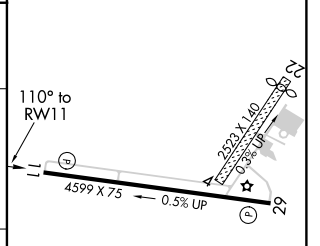
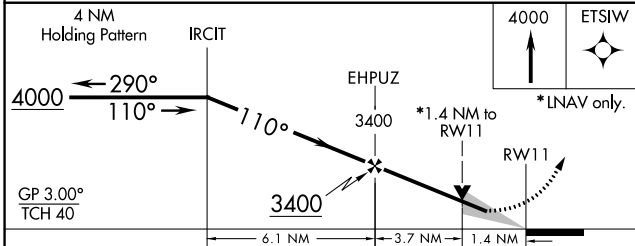


NE-4, 10 OCT 2019 to 07 NOV 2019

NE-4, 10 OCT 2019 to 07 NOV 2019



ELEV 1729	TDZE 1729
-----------	-----------



CATEGORY	A	B	C	D
LPV DA	1929-¾		200 (200-¾)	
LNAV/DA VNAV	2109-1¼		380 (400-1¼)	
LNAV MDA	2200-1	471 (500-1)	2200-1¼ 471 (500-1¼)	2200-1½ 471 (500-1½)
CIRCLING	2200-1	471 (500-1)	2200-1½ 471 (500-1½)	2280-2 551 (600-2)

REIL Rwy 11 and 29 **0**  
MRL Rwy 11-29 **0**