

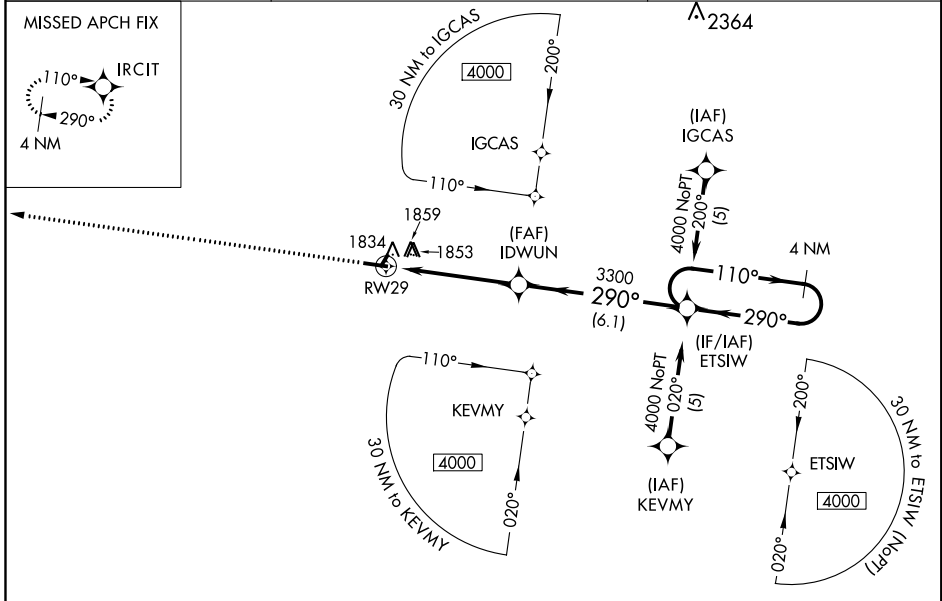
WAAS CH 63014 W29A	APP CRS 290°	Rwy Idg TDZE Apt Elev	4599 1724 1729
----------------------------------------	------------------------	-----------------------------	-------------------------------------------

RNAV (GPS) RWY 29
SCHUYLKILL COUNTY/JOE ZERBEY (Z.E.R.)

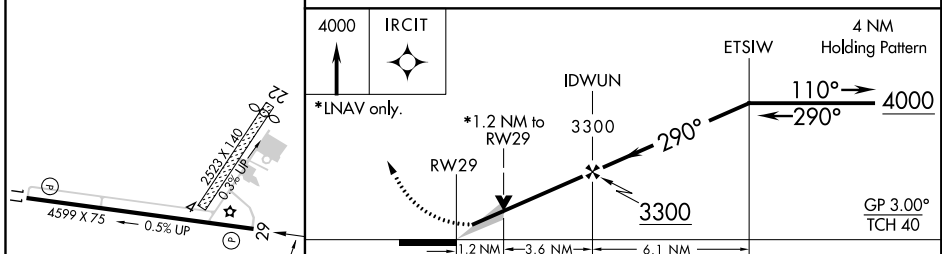
NA Baro-VNAV NA when using Selinsgrove altimeter setting. For uncompensated Baro-VNAV systems, LNAV/VNAV NA below -18°C (0°F) or above 45°C (113°F). DME/DME RNP-0.3 NA. VDP NA when using Selinsgrove altimeter setting. When local altimeter setting not received, use Selinsgrove altimeter setting and increase all DA 261 feet and all MDA 280 feet. Increase LPV and LNAV/VNAV all Cats and LNAV Cat C and Cat D visibility 1 mile and increase circling Cat C ½ mile and Cat D ¾ mile. Circling NA to Rwy's 4 and 22.

MISSED APPROACH: Climb to 4000 direct IRCIT and hold.

AWOS-3 127.575	HARRISBURG APP CON 118.25 269.45	UNICOM 123.075 (CTAF) 0
--------------------------	--------------------------------------------	------------------------------------------



ELEV 1729	TDZE 1724
-----------	-----------



CATEGORY	A	B	C	D
LPV DA		1924-¾	200 (200-¾)	
LNAV/VNAV DA		2144-1½	420 (500-1½)	
LNAV MDA		2120-1	396 (400-1)	2120-1¼ 396 (400-1¼)
CIRCLING	2160-1 431 (500-1)	2180-1 451 (500-1)	2180-1½ 451 (500-1½)	2280-2 551 (600-2)

NE-4, 10 OCT 2019 to 07 NOV 2019

NE-4, 10 OCT 2019 to 07 NOV 2019