

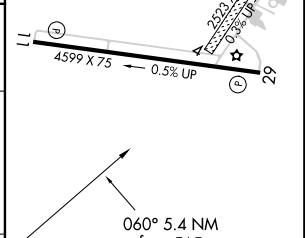
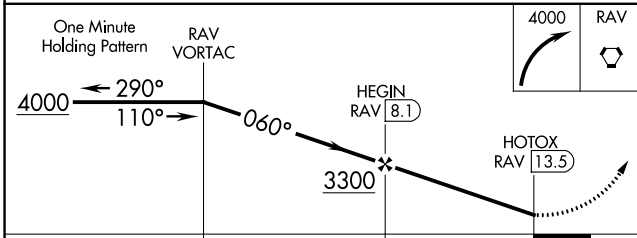
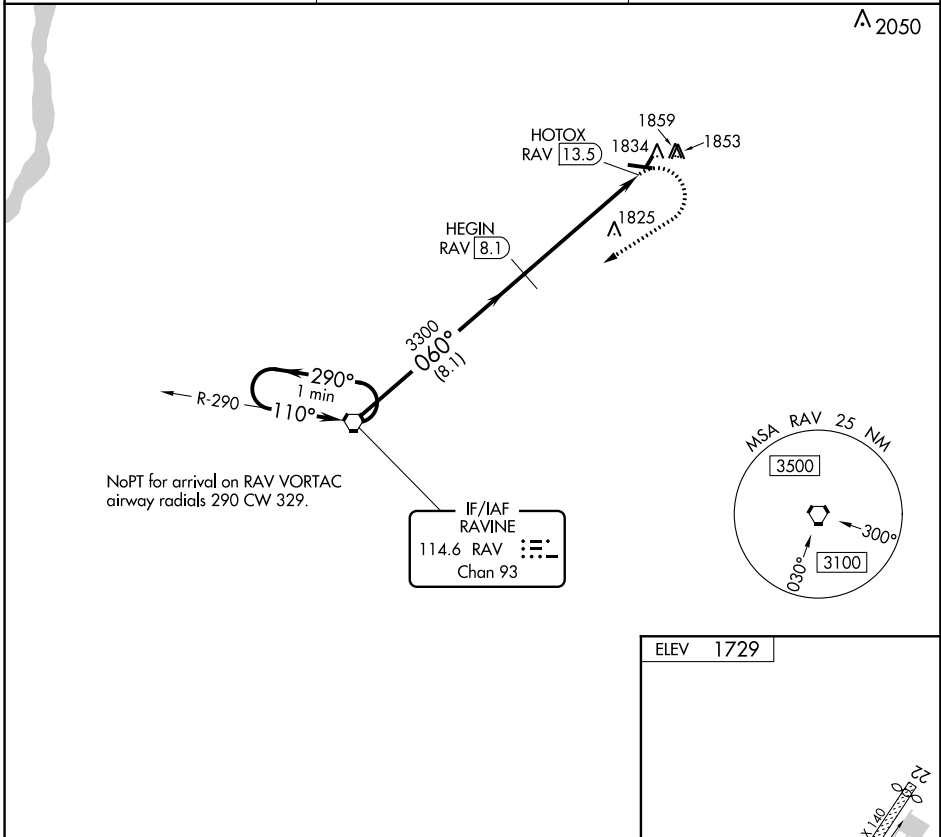
VORTAC RAV 114.6 Chan 93	APP CRS 060°	Rwy ldg TDZE N/A Apt Elev 1729
--	------------------------	--

VOR-A
SCHUYLKILL COUNTY/JOE ZERBEY (ZÉR)

NA Circling to Rwy 4, 22 NA at night. DME required.
When local altimeter setting not received, use Penn Valley altimeter setting and increase all MDAs 280 feet and visibility Cat C and D ¾ SM.

MISSED APPROACH: Climbing right turn to 4000 direct RAV VORTAC and hold.

AWOS-3 127.575	HARRISBURG APP CON 118.25 269.45	UNICOM 123.075 (CTAF) 0
--------------------------	--	--



CATEGORY	A	B	C	D	
C CIRCLING	2160-1 431 (500-1)	2180-1 451 (500-1)	2240-1½ 511 (600-1½)	2280-2 551 (600-2)	MIRL Rwy 11-29 0 REIL Rwys 11 and 29 0

NE-4, 10 OCT 2019 to 07 NOV 2019

NE-4, 10 OCT 2019 to 07 NOV 2019