

(BLTWY6.BLTWY) 19115
BLTWY SIX DEPARTURE (RNAV)

DAVID WAYNE HOOKS MEMORIAL (DWH)
 AL-5457 (FAA) HOUSTON, TEXAS

ATIS
 128.375
 CLNC DEL
 119.45
 GND CON
 121.8 239.0
 HOOKS TOWER ★
 127.4 354.1 (EAST)
 118.4 (CTAF) 354.1 (WEST)
 HOUSTON DEP CON
 119.7 281.4

**TOP ALTITUDE:
 ASSIGNED BY ATC**

NOTE: RADAR required.
 NOTE: DME/DME/IRU or GPS required.
 NOTE: RNAV 1.

TAKEOFF MINIMUMS

Rwys 17L, 35R: NA - Environmental.
 Waterways 17, 35: NA - Air Traffic.
 Rwys 17R, 35L: Standard with minimum
 climb of 500' per NM to 660.

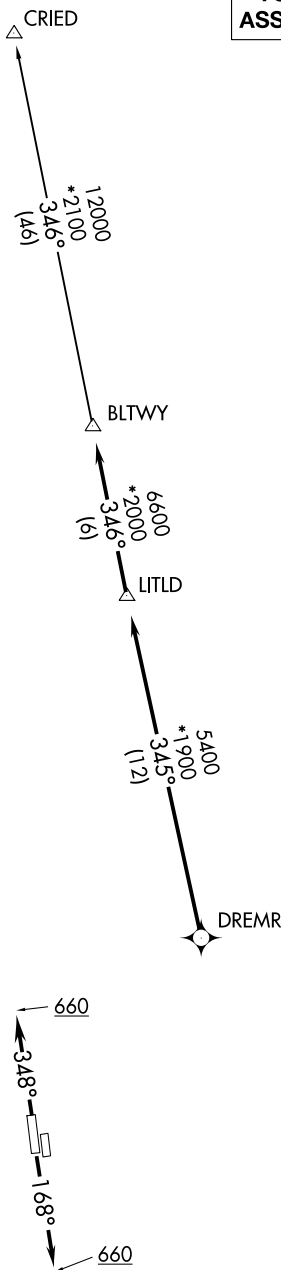
▼ **DEPARTURE ROUTE DESCRIPTION**

TAKEOFF RWY 17R: Climb on heading
 168° to 660 for RADAR vectors to
 DREMR, thence

TAKEOFF RWYS 35L: Climb on heading
 348° to 660 for RADAR vectors to
 DREMR, thence

...on track 345° to LITLD, then on track
 346° to BLTWY, then on (transition).
 Maintain ATC assigned altitude. Expect
 filed altitude 10 minutes after departure.

CRIED TRANSITION (BLTWY6.CRIED)



NOTE: Chart not to scale.

BLTWY SIX DEPARTURE (RNAV)
 (BLTWY6.BLTWY) 25APR19

HOUSTON, TEXAS
 DAVID WAYNE HOOKS MEMORIAL (DWH)

SC-5, 10 OCT 2019 to 07 NOV 2019

SC-5, 10 OCT 2019 to 07 NOV 2019