

KARRR FIVE DEPARTURE (RNAV)

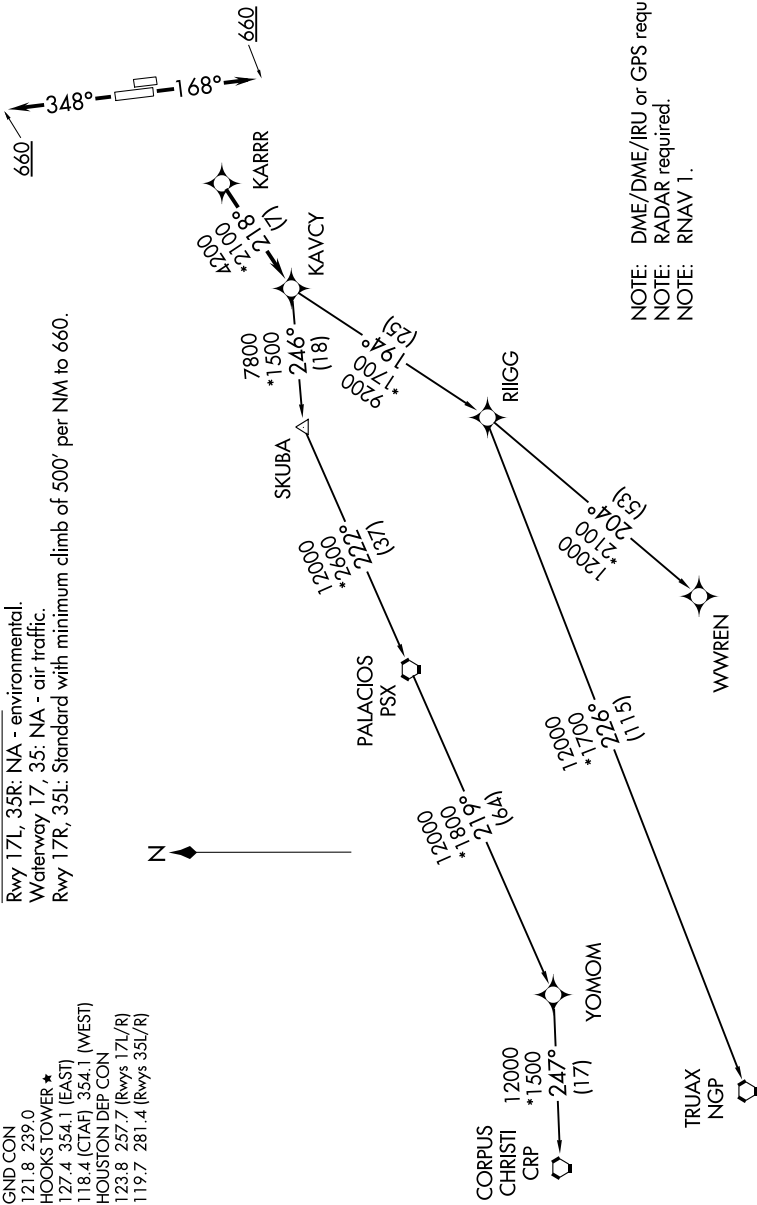
SC-5, 10 OCT 2019 to 07 NOV 2019

**TOP ALTITUDE:
ASSIGNED BY ATC**

ATIS 128.375
 CLNC DEL 119.45
 GND CON 121.8 239.0
 HOOKS TOWER * 127.4 354.1 (EAST)
 118.4 (CTAF) 354.1 (WEST)
 HOUSTON DEP CON 123.8 257.7 (Rwys 17L/R)
 119.7 281.4 (Rwys 35L/R)

TAKEOFF MINIMUMS:

Rwy 17L, 35R: NA - environmental.
 Waterway 17, 35: NA - air traffic.
 Rwy 17R, 35L: Standard with minimum climb of 500' per NM to 660.



NOTE: Chart not to scale.

(NARRATIVE ON FOLLOWING PAGE)

SC-5, 10 OCT 2019 to 07 NOV 2019

KARRR FIVE DEPARTURE (RNAV)