

LOC/DME I-HEW 110.5 Chan 42	APP CRS 168°	Rwy Idg TDZE 152 Apt Elev 152	6002
---	------------------------	---	-------------

LOC RWY 17R

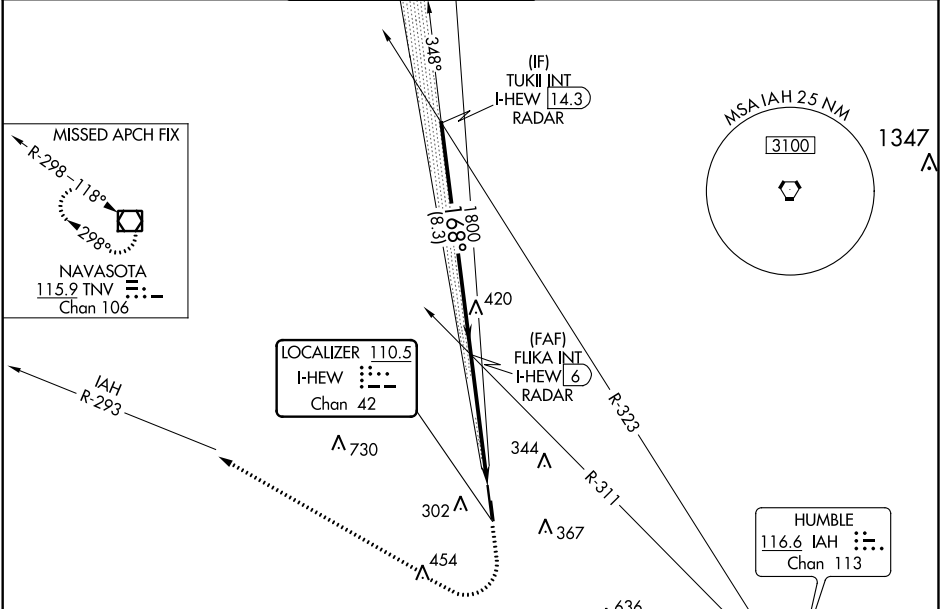
DAVID WAYNE HOOKS MEMORIAL (DWH)

RADAR required for procedure entry.

MISSED APPROACH: Climb to 1200 then climbing right turn to 2000 on heading 325° and IAH VORTAC R-293 to TNV VOR/DME and hold.

When local altimeter setting not received, use George Bush Intercontinental/Houston altimeter setting and increase all MDA 40 feet; increase S-LOC 17R Cats C/D visibility 1/8 mile. Circling NA to Rwy 17W and 35W. Rwy 17R helicopter visibility reduction below 3/4 SM NA.

ATIS 128.375	HOUSTON APP CON 119.7 281.4	HOOKS TOWER* 127.4 354.1 EAST 118.4 (CTAF) 354.1 WEST	GND CON 121.8 239.0	CLNC DEL 119.45	UNICOM 122.95
------------------------	---------------------------------------	---	-------------------------------	---------------------------	-------------------------



ELEV 152	D	TDZE 152
----------	----------	----------

168° 4.9 NM from FAF

238' Δ 17W-35W 2530 X 100 Rwy 17L-35R 3500 X 35

700' X 100'

Seaplane Landing Area 35W

189' Δ 35L 35R

HIRL Rwy 17R-35L \bullet

REIL Rwy 17R and 35L \bullet

FAF to MAP 4.9NM

Knots	60	90	120	150	180
Min:Sec	4:54	3:16	2:27	1:58	1:38

TUKII INT I-HEW 14.3 RADAR	2000	168°	FLIKA INT I-HEW 6 RADAR	1800	I-HEW 1.1	TNV
					Visual Segment - Obstacles.	
					1200	2000
					hdg 325°	IAH R-293
					8.3 NM	4.9 NM
CATEGORY	A	B	C	D		
S-LOC 17R	640-1	488 (500-1)	640-1 3/8	488 (500-1 3/8)		
C CIRCLING	640-1	660-1	680-1 1/2	760-2		
	488 (500-1)	508 (600-1)	528 (600-1 1/2)	608 (700-2)		

SC-5, 10 OCT 2019 to 07 NOV 2019

SC-5, 10 OCT 2019 to 07 NOV 2019