

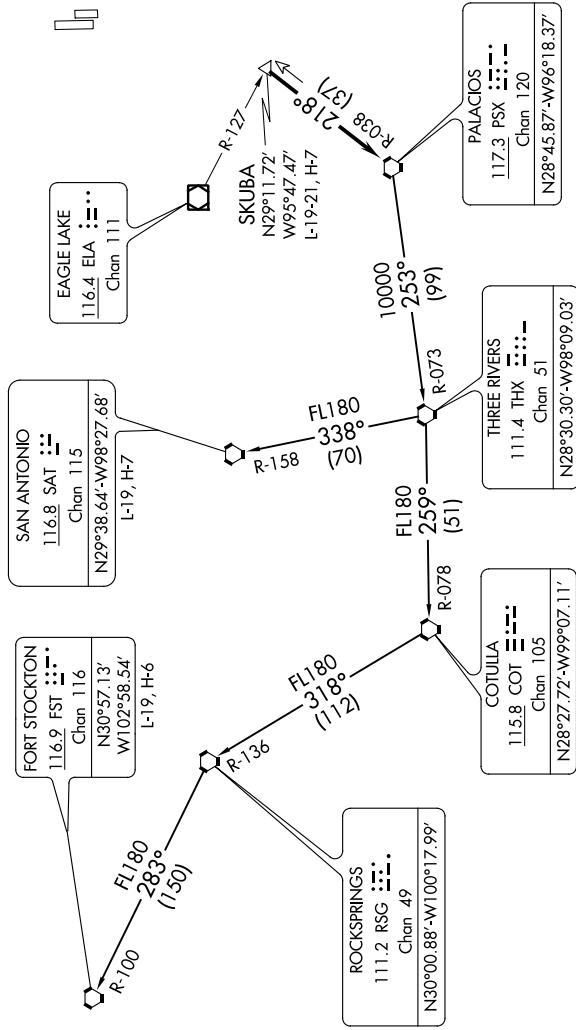
TOP ALTITUDE:
ASSIGNED BY ATC

SC-5, 10 OCT 2019 to 07 NOV 2019

ATIS 128.375
 CLNC DEL 119.45
 GND CON 121.8 239.0
 HOOKS TOWER* 127.4 354.1 (EAST)
 118.4 (CTAF) 354.1 (WEST)
 HOUSTON DEP CON 119.7 281.4

TAKEOFF MINIMUMS

Rwy 17L, 35R: NA - Environmental.
 Waterway 17, 35: NA - Air Traffic.
 Rwy 17R, 35L: Standard.



NOTE: RADAR required.
 NOTE: Chart not to scale.

(NARRATIVE ON FOLLOWING PAGE)

SC-5, 10 OCT 2019 to 07 NOV 2019