

WAAS CH 45603 W35A	APP CRS 348°	Rwy ldg 6700 TDZE 152 Apt Elev 152
--	------------------------	---

RNAV (GPS) RWY 35L

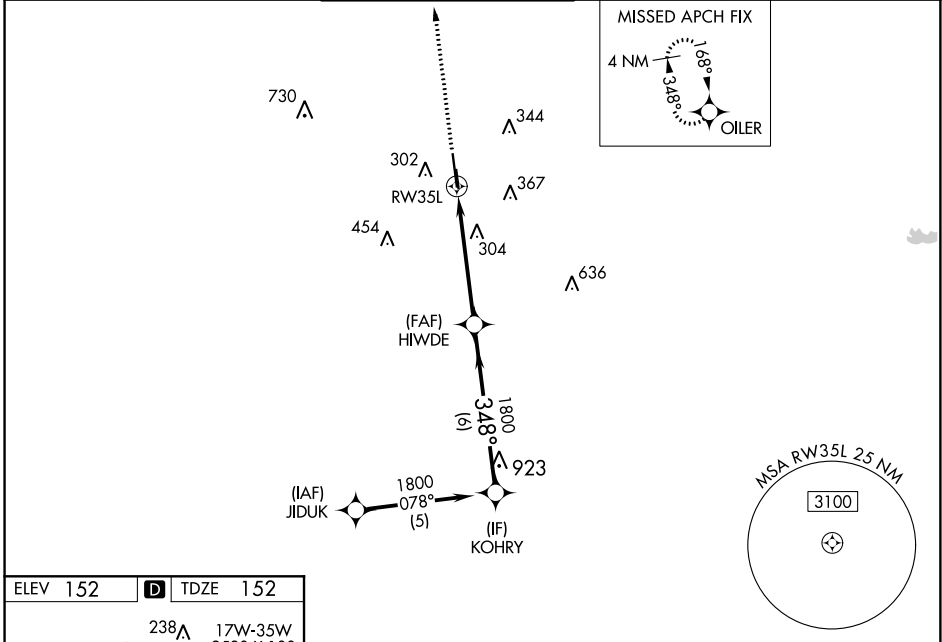
DAVID WAYNE HOOKS MEMORIAL (DWH)

RNP APCH.

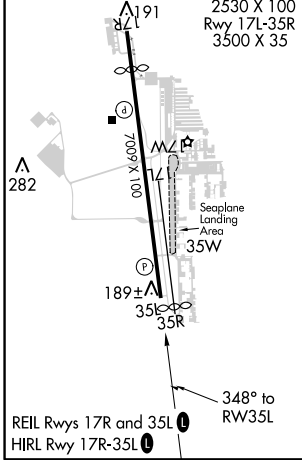
⚠ Baro-VNAV and VDP NA when using George Bush Intercontinental/Houston altimeter setting. For uncompensated Baro-VNAV systems, LNAV/VNAV NA below -4°C (25°F) or above 54°C (130°F). When local altimeter setting not received, use George Bush Intercontinental/Houston altimeter setting and increase all DA 36 feet and all MDA 40 feet, increase LPV and LNAV/VNAV visibility all Cats 1/8 mile, LNAV visibility Cats C/D 1/4 mile. Rwy 35L helicopter visibility reduction below 3/4 SM NA. Circling NA to Rwys 17W and 35W.

MISSED APPROACH:
Climb to 2000 direct OILER and hold.

ATIS 128.375	HOUSTON APP CON 119.7 281.4	HOOKS TOWER* 127.4 354.1 (EAST) 118.4 (CTAF) 354.1 (WEST)	GND CON 121.8 239.0	CLNC DEL 119.45	UNICOM 122.95
------------------------	---------------------------------------	---	-------------------------------	---------------------------	-------------------------



ELEV 152	D	TDZE 152
----------	----------	----------



2000	OILER	VGSi and RNAV glidepath not coincident (VGSi Angle 3.00/TCH 41).			
*LNAV only.	*1.2 NM to RW35L	HIWDE 1800	KOHRY 1800		
		348°	1800	GP 3.00° TCH 45	
	1.2 NM	3.8 NM	6 NM		
CATEGORY	A	B	C	D	
LPV DA		451-1	299 (300-1)		
LNAV/ VNAV DA		552-1 3/8	400 (400-1 1/8)		
LNAV MDA	560-1	408 (500-1)	560-1 1/8	408 (500-1 1/8)	
C CIRCLING	640-1 488 (500-1)	660-1 508 (600-1)	680-1 1/2 528 (600-1 1/2)	760-2 608 (700-2)	

SC-5, 10 OCT 2019 to 07 NOV 2019

SC-5, 10 OCT 2019 to 07 NOV 2019