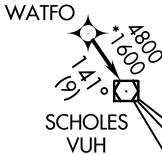
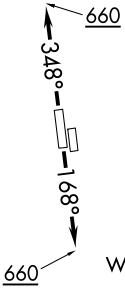


# WATFO FIVE DEPARTURE (RNAV)

**TOP ALTITUDE:  
ASSIGNED BY ATC**

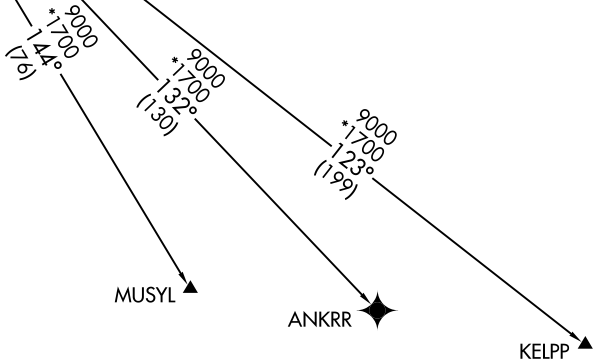
- ATIS 128.375
- CLNC DEL 119.45
- GND CON 121.8 239.0
- HOOKS TOWER \* 127.4 354.1 (EAST)
- 118.4 (CTAF) 354.1 (WEST)
- HOUSTON DEP CON 119.7 281.4 (Rwys 35L/R)
- 123.8 257.7 (Rwys 17L/R)



**TAKEOFF MINIMUMS:**

Rwy 17L, 35R: NA - environmental.  
 Waterway 17, 35: NA - air traffic.  
 Rwy 17R, 35L: Standard with minimum climb of 500' per NM to 660.

- NOTE: GPS required.
- NOTE: RADAR required.
- NOTE: RNAV 1.



NOTE: Chart not to scale.

## DEPARTURE ROUTE DESCRIPTION

TAKEOFF RWY 17R: Climb on heading 168° to 660, for RADAR vectors to WATFO, thence. . . .

TAKEOFF RWY 35L: Climb on heading 348° to 660, for RADAR vectors to WATFO, thence. . . .

. . . on track 141° to VUH VOR/DME, then on (transition). Maintain ATC assigned altitude. Expect filed altitude 10 minutes after departure.

ANKRR TRANSITION (WATFO5.ANKRR)

KELPP TRANSITION (WATFO5.KELPP)

MUSYL TRANSITION (WATFO5.MUSYL)

SC-5, 10 OCT 2019 to 07 NOV 2019

SC-5, 10 OCT 2019 to 07 NOV 2019