

WAAS CH <b>40102</b> <b>W10A</b>	APP CRS <b>101°</b>	Rwy Idg TDZE Apt Elev	<b>4300</b> <b>1909</b> <b>1934</b>
--	------------------------	-----------------------------	---

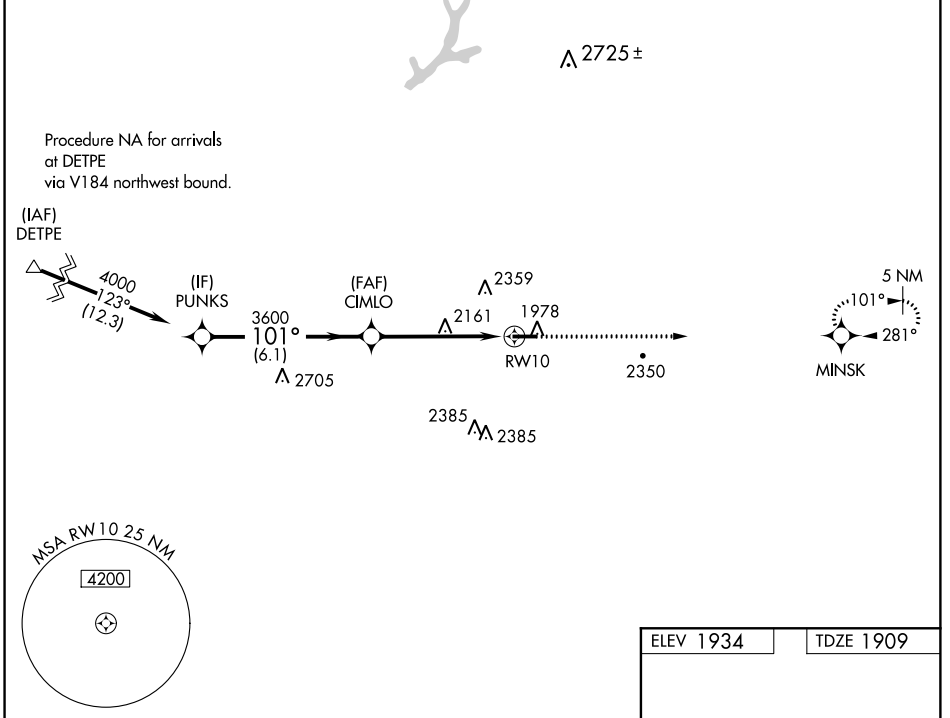
# RNAV (GPS) RWY 10

ST MARYS MUNI (OYM)

**▽** DME/DME RNP-0.3 NA. Helicopter visibility reduction below 3/4 SM NA. When local altimeter setting not received, use Bradford altimeter setting and increase all DA/MDA 240 feet, and LPV all Cats visibility 3/4 mile, LNAV Cat A/B 1/4 mile and Cat C/D 5/8 mile, and Circling Cat A/D 1/4 mile and Cat B 1/2 mile and Cat C 1 mile. VDP NA when using Bradford altimeter setting.

**△ NA** MISSED APPROACH: Climb to 4000 direct MINSK and hold.

AWOS-3P <b>118.05</b>	CLEVELAND CENTER <b>124.325 353.85</b>	ALTOONA CLNC DEL <b>122.4</b>	UNICOM <b>122.7 (CTAF) 0</b>
--------------------------	---	----------------------------------	---------------------------------



Procedure Turn NA

PUNKS

4000

101°

CIMLO

3600

\*2 NM to RWY 10

RWY 10

6.1 NM

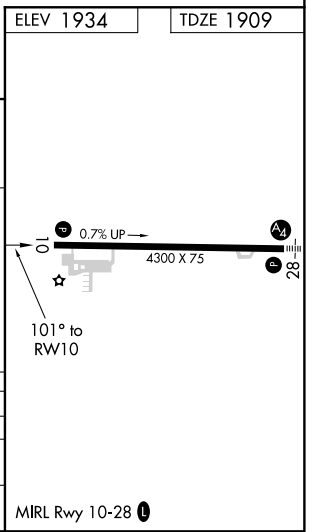
3.1 NM

2 NM

GP 3.00°

TCH 40

CATEGORY	A	B	C	D
LPV DA	2169-1		260 (300-1)	
LNAV MDA	2580-1	671 (700-1)	2580-17/8	671 (700-17/8)
CIRCLING	2620-1 686 (700-1)	2660-1 726 (800-1)	2660-2 726 (800-2)	2800-23/4 866 (900-23/4)



NE-4, 10 OCT 2019 to 07 NOV 2019

NE-4, 10 OCT 2019 to 07 NOV 2019