

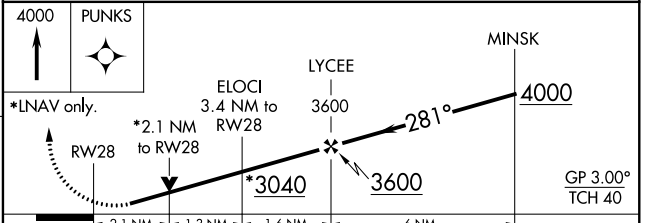
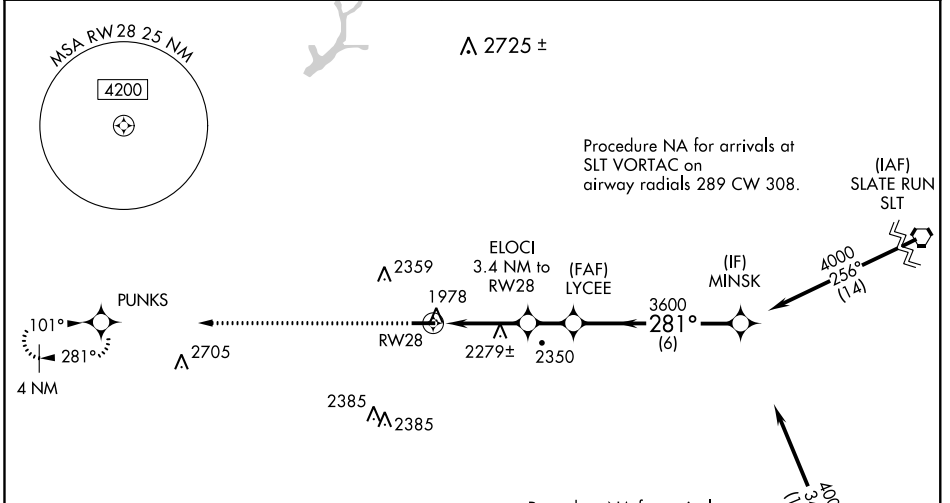
WAAS CH 82302 W28A	APP CRS 281°	Rwy Idg TDZE Apt Elev	4300 1934 1934
--	------------------------	-----------------------------	---

RNAV (GPS) RWY 28

ST MARYS MUNI (OYM)

RNP APCH.	<p>▽ Rwy 28 helicopter visibility reduction below 3/4 SM NA. Inop table does not apply to LPV all cats and LNAV Cat A/B. VDP NA when using Bradford altimeter setting.</p> <p>▲ NA When local altimeter setting not received, use Bradford altimeter setting and increase all DA/MDA 240 feet, LPV all cats visibility 3/8 SM, LNAV Cat C/D 3/4 SM, and Circling Cat A/D 1/4 SM and Cat B 1/2 SM and Cat C 1 SM. When using Bradford altimeter setting, inop table does not apply to LNAV Cat C/D. For inop ALS when using Bradford altimeter setting, increase LPV all Cats visibility to 1 1/4 SM and LNAV Cat A/B to 1 1/4 SM.</p>	MALS	<p>MISSED APPROACH: Climb to 4000 direct PUNKS and hold.</p>

AWOS-3P 118.05	CLEVELAND CENTER 124.325 353.85	ALTOONA CLNC DEL 122.4	UNICOM 122.7 (CTAF) 0
--------------------------	---	----------------------------------	---------------------------------



CATEGORY	A	B	C	D
LPV DA	2290-1		356 (400-1)	
LNAV MDA	2640-1	706 (800-1)	2640-1 3/4	706 (800-1 3/4)
CIRCLING	2640-1 706 (800-1)	2660-1 726 (800-1)	2660-2 726 (800-2)	2800-2 3/4 866 (900-2 3/4)

NE-4, 10 OCT 2019 to 07 NOV 2019

NE-4, 10 OCT 2019 to 07 NOV 2019