

VOR/DME AHN 109.6 Chan 33	APP CRS 199°	Rwy Idg TDZE Apt Elev N/A 694
---	------------------------	--

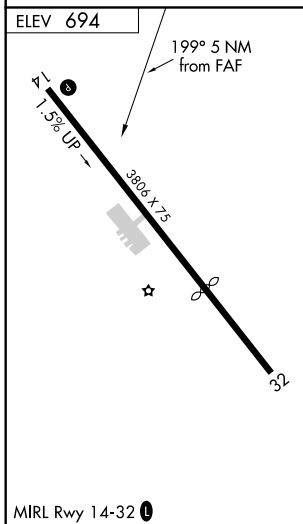
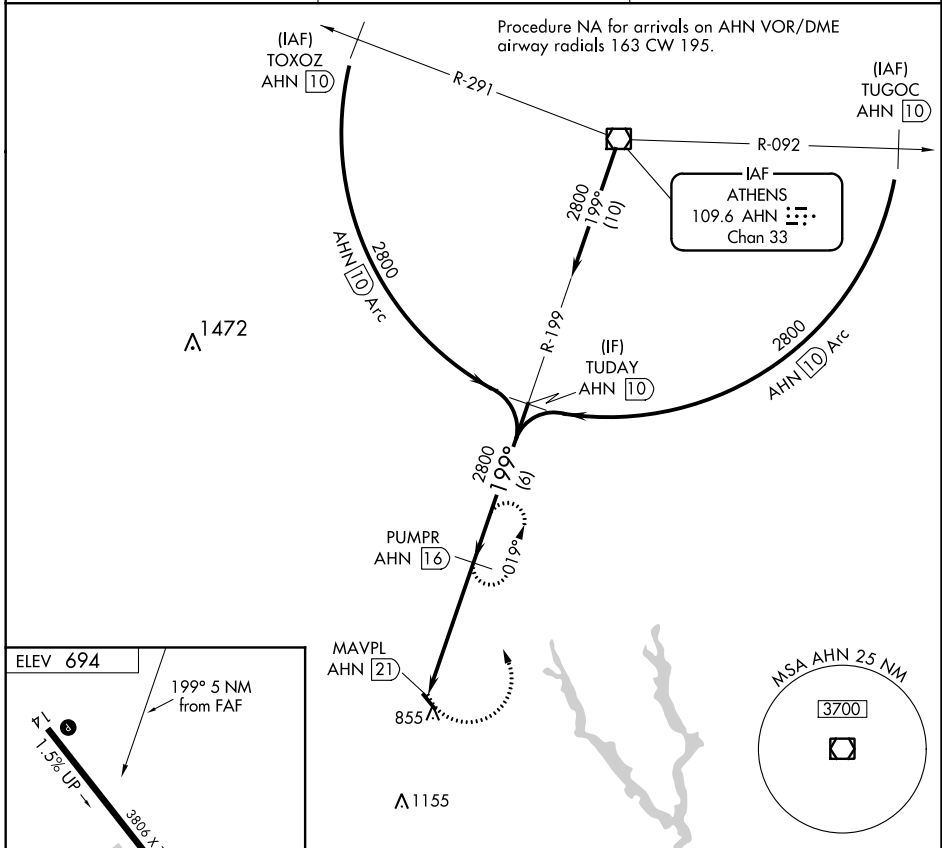
VOR/DME-A

MADISON MUNI (52A)

NA Procedure NA at night. Use Athens altimeter setting. Visibility reduction by helicopters NA.

MISSED APPROACH: Climbing left turn to 2800 on AHN VOR/DME R-199 to PUMPR/AHN 16 DME and hold.

AHN ASOS 132.875	ATLANTA APP CON ★ 132.475 291.1	UNICOM 122.8 (CTAF) 0
----------------------------	---	---------------------------------



	2800 AHN R-199	PUMPR AHN 16	PUMPR AHN 16	TUDAY AHN 10	Procedure Turn NA
	MAVPL AHN 21	2800	199°	2800	
	5 NM		6 NM		
CATEGORY	A	B	C	D	
CIRCLING	1220-1 526 (600-1)	1220-1¼ 526 (600-1¼)	1220-1½ 526 (600-1½)	NA	

SE-4, 10 OCT 2019 to 07 NOV 2019

SE-4, 10 OCT 2019 to 07 NOV 2019