

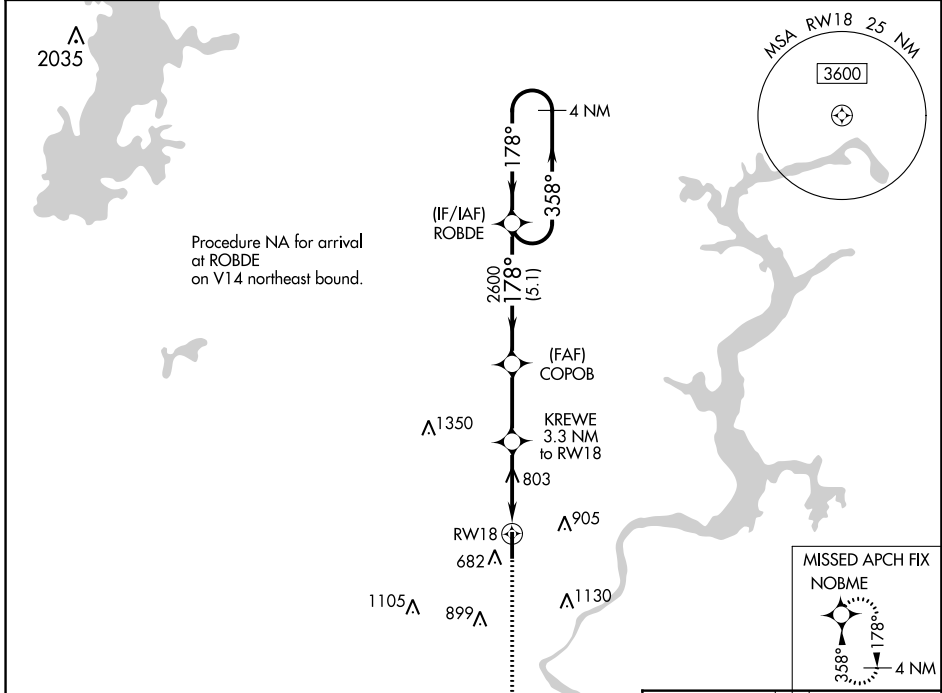
WAAS CH 93938 W18A	APP CRS 178°	Rwy Idg TDZE 622 Apt Elev 622	4992
--	------------------------	---	-------------

RNAV (GPS) RWY 18

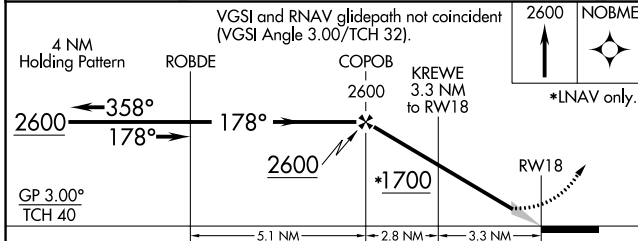
MID-AMERICA INDUSTRIAL (H71)

▼ Baro-VNAV NA. DME/DME RNP-0.3 NA.
▲ NA Night Landing: Rwy 36 NA. Use Tulsa Intl altimeter setting. MISSED APPROACH: Climb to 2600 direct NOBME and hold.

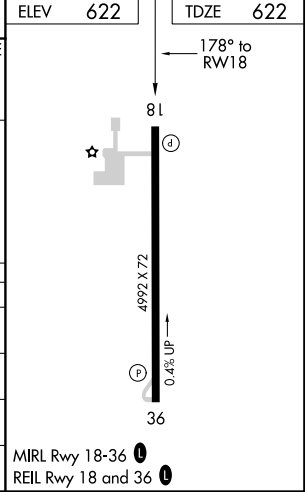
TUL ASOS 124.9 377.2	TULSA APP CON 119.1 351.8	UNICOM 122.8 (CTAF) 0
--------------------------------	-------------------------------------	---------------------------------



ELEV	622	TDZE	622
------	-----	------	-----



CATEGORY	A	B	C	D
LPV DA	943-1 $\frac{1}{8}$ 321 (400-1 $\frac{1}{8}$)			NA
LNAV/VNAV MDA	1108-1 $\frac{5}{8}$ 486 (500-1 $\frac{5}{8}$)			NA
LNAV MDA	1140-1	518 (600-1)	1140-1 $\frac{3}{8}$ 518 (600-1 $\frac{3}{8}$)	NA
C CIRCLING	1200-1	578 (600-1)	1560-2 $\frac{3}{4}$ 938 (1000-2 $\frac{3}{4}$)	NA



SC-1, 10 OCT 2019 to 07 NOV 2019

SC-1, 10 OCT 2019 to 07 NOV 2019