

LOC I-GVQ <b>108.9</b>	APP CRS <b>282°</b>	Rwy Idg TDZE Apt Elev	<b>5499</b> <b>911</b> <b>913</b>
---------------------------	------------------------	-----------------------------	---

# ILS or LOC RWY 28

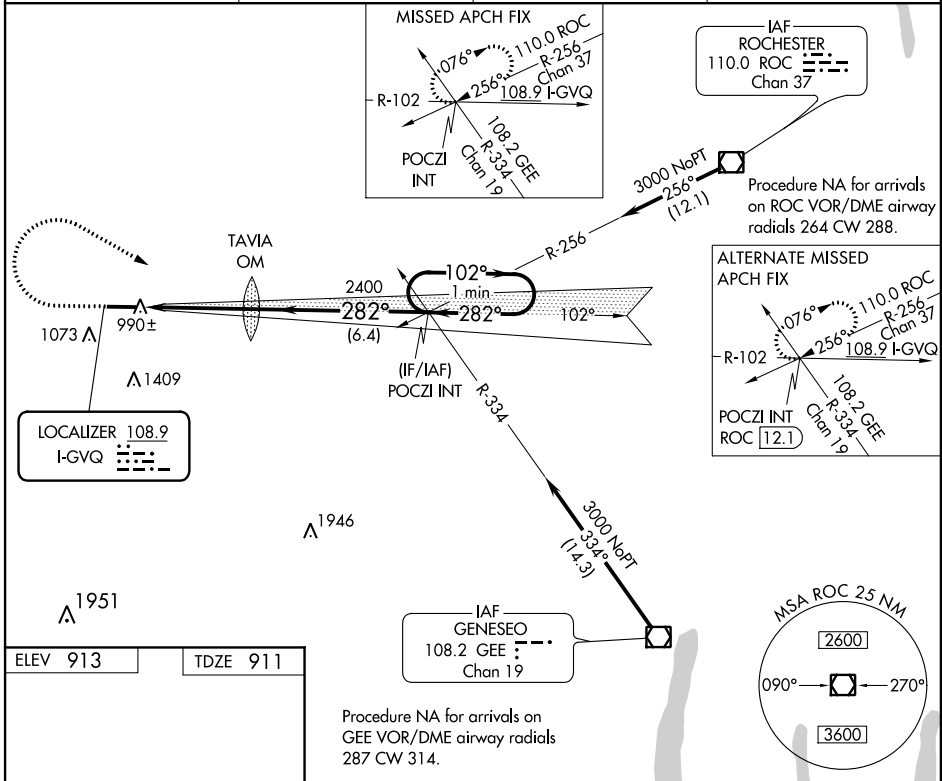
GENESEE COUNTY (GVQ)

**NA** When local altimeter setting not received, use Rochester altimeter setting and increase all DA 102 feet and all MDA 120 feet; increase S-LOC 28 Cats C/D and Circling Cat D visibility ¼ mile. Autopilot coupled approach NA below 1433.

**MALS**

**MISSED APPROACH:** Climb to 1500 then climbing right turn to 3000 via heading 130° and I-GVQ east course to POCZI INT and hold.

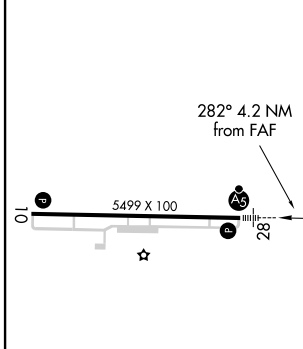
AWOS-3PT <b>127.525</b>	ROCHESTER APP CON <b>123.7 322.3</b>	CLNC DEL <b>121.8</b>	UNICOM <b>122.7</b> (CTAF) <b>0</b>
----------------------------	---	--------------------------	--



NE-2, 10 OCT 2019 to 07 NOV 2019

NE-2, 10 OCT 2019 to 07 NOV 2019

ELEV 913	TDZE 911
----------	----------

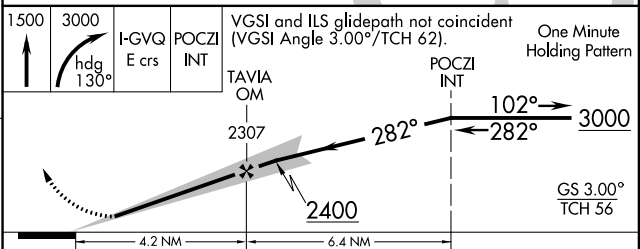


REIL Rwy 10 **0**

HIRL Rwy 10-28 **0**

FAF to MAP 4.2 NM

Knots	60	90	120	150	180
Min:Sec	4:12	2:48	2:06	1:41	1:24



CATEGORY	A	B	C	D
S-ILS 28	1111-½ 200 (200-½)			
S-LOC 28	1260-½ 349 (400-½)			1260-¾ 349 (400-¾)
CIRCLING	1380-1	467 (500-1)	1380-1½ 467 (500-1½)	1480-2 567 (600-2)