

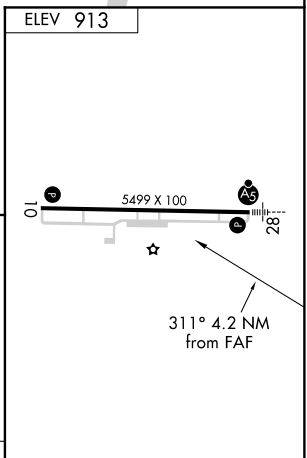
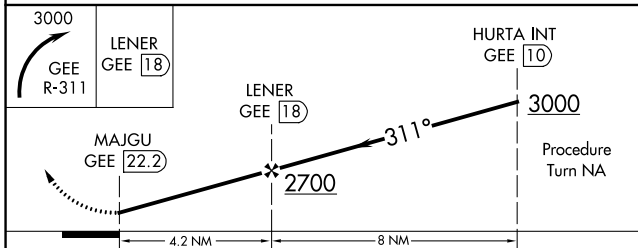
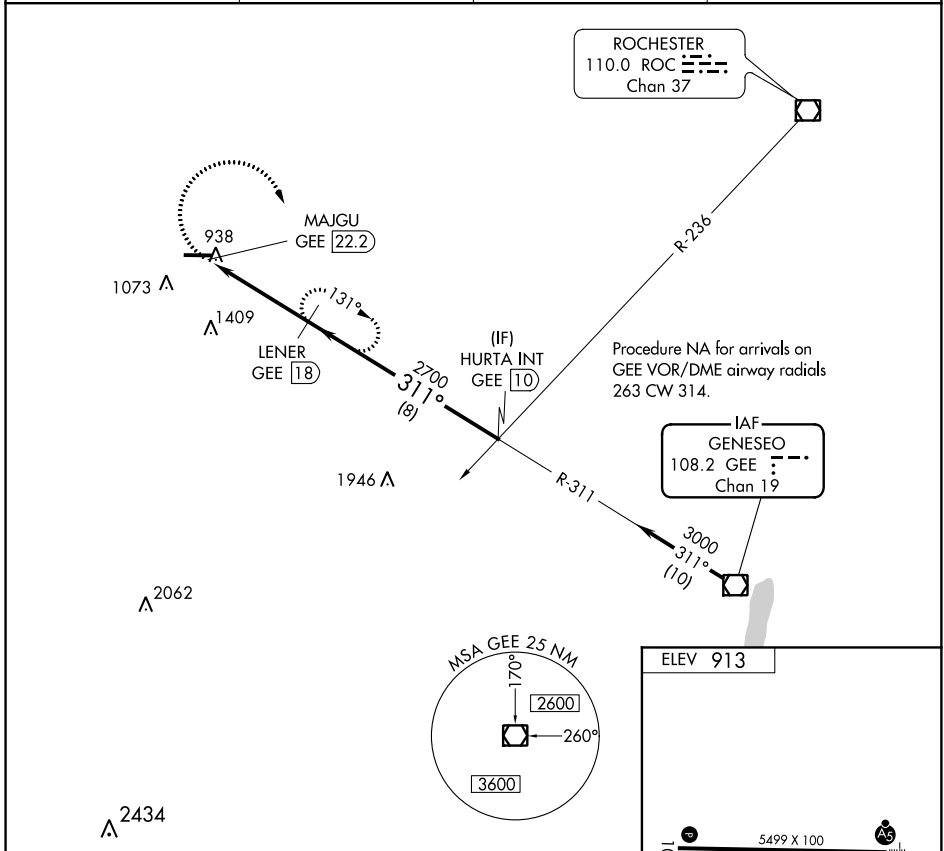
VOR/DME GEE 108.2 Chan 19	APP CRS 311°	Rwy Idg TDZE Apt Elev	N/A N/A 913
---	------------------------	-----------------------------	--

VOR/DME-A
GENESEE COUNTY (GVQ)

NA When local altimeter setting not received, use Rochester altimeter setting and increase all MDA 120 feet; increase Cat C and D visibility 1/2 mile.

MISSED APPROACH: Climbing right turn to 3000 via GEE VOR/DME R-311 to LENER/18 DME and hold, continue to climb-in-hold to 3000.

AWOS-3PT 127.525	ROCHESTER APP CON 123.7 322.3	CINC DEL 121.8	UNICOM 122.7 (CTAF) 0
----------------------------	---	--------------------------	--



CATEGORY	A	B	C	D
CIRCLING	1620-1 707 (800-1)	1620-1 1/4 707 (800-1 1/4)	1620-2 707 (800-2)	1620-2 1/4 707 (800-2 1/4)

REIL Rwy 10 **0**

HIRL Rwy 10-28 **0**

NE-2, 10 OCT 2019 to 07 NOV 2019

NE-2, 10 OCT 2019 to 07 NOV 2019