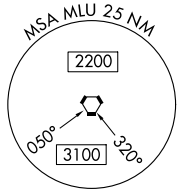
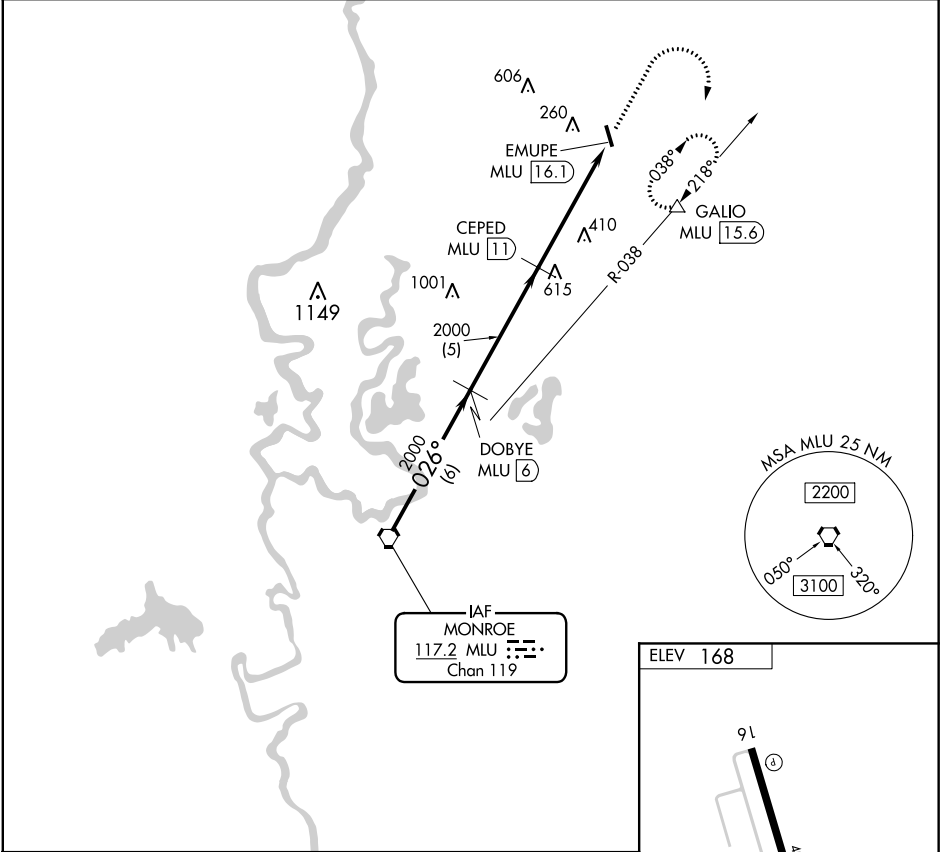


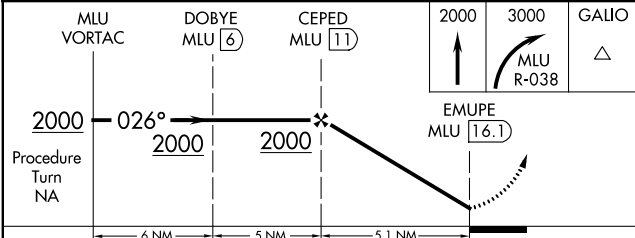
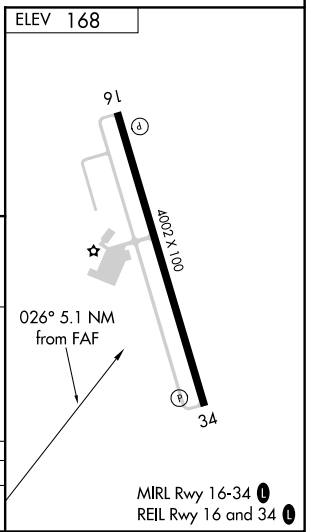
|   |                        |   |
|---|------------------------|---|
| VORTAC MLU<br><b>117.2</b><br>Chan <b>119</b> | APP CRS<br><b>026°</b> | Rwy Idg<br>TDZE<br>Apt Elev<br><b>N/A</b><br><b>N/A</b><br><b>168</b> |
|---|------------------------|---|

**VOR/DME-A**  
MOREHOUSE MEMORIAL (BQP)

|  |   |                       |                               |
|--|---|-----------------------|-------------------------------|
| <b>NA</b><br>When local altimeter setting not received, use Monroe altimeter setting and increase all MDA 60 feet and Cat C visibility 1/4 mile. | MISSED APPROACH: Climb to 2000 then climbing right turn to 3000 via MLU R-038 to GALIO/MLU 15.6 DME and hold. |                       |                               |
| AWOS-3PT<br><b>118,375</b>   | MONROE APP CON*<br><b>126.9 307.9</b>   | GCO<br><b>135,075</b> | UNICOM<br><b>122.8 (CTAF)</b> |



IAF  
MONROE  
117.2 MLU  
Chan 119



|          |       |             |                              |    |
|----------|-------|-------------|------------------------------|----|
| CATEGORY | A     | B           | C                            | D  |
| CIRCLING | 720-1 | 552 (600-1) | 780-1 3/4<br>612 (700-1 3/4) | NA |

SC-4, 10 OCT 2019 to 07 NOV 2019

SC-4, 10 OCT 2019 to 07 NOV 2019

MIRL Rwy 16-34  
REIL Rwy 16 and 34