

(BAYLR4.BOBBA) 18256

# BAYLR FOUR DEPARTURE (RNAV)

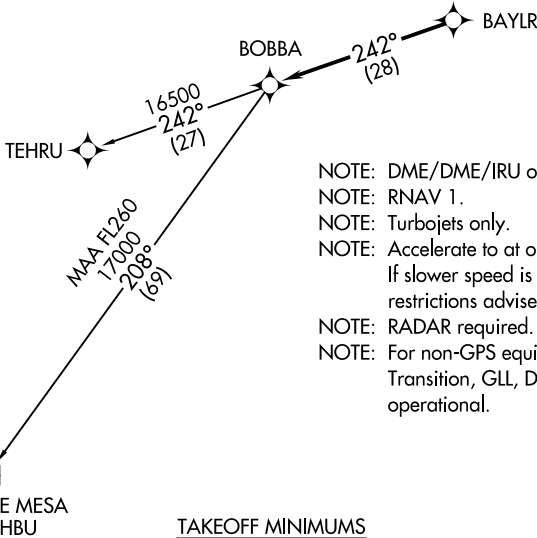
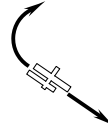
ROCKY MOUNTAIN METROPOLITAN (BJC)

AL-5612 (FAA)

DENVER, COLORADO

ATIS  
126.25  
CLNC DEL  
132.6  
DENVER DEP CON  
126.1 360.75

**TOP ALTITUDE:  
FL230**



- NOTE: DME/DME/IRU or GPS required.
- NOTE: RNAV 1.
- NOTE: Turbojets only.
- NOTE: Accelerate to at or above 250K above 10000. If slower speed is required to meet crossing restrictions advise CLNC DEL prior to taxi.
- NOTE: RADAR required.
- NOTE: For non-GPS equipped aircraft on the Blue Mesa Transition, GLL, DBL, and HBU DMEs must be operational.

### TAKEOFF MINIMUMS

- Rwys 3, 21: NA - ATC.
- Rwys 12L/R: Standard with minimum climb of 285' per NM to 16500.
- Rwys 30L/R: Standard with minimum climb of 260' per NM to 16500.

NOTE: Chart not to scale.



### DEPARTURE ROUTE DESCRIPTION

TAKEOFF RUNWAYS 12L/R: Climb heading between 150° CCW 350° as assigned by ATC. Thence. . . .

TAKEOFF RUNWAYS 30L/R: Climbing right turn heading between 350° CW 113° as assigned by ATC. Thence. . . .

. . . .RADAR vectors to BAYLR , then on depicted route to BOBBA, maintain FL230 or filed lower altitude, expect higher filed altitude 10 minutes after departure.

BLUE MESA TRANSITION (BAYLR4.HBU)

TEHRU TRANSITION (BAYLR4.TEHRU)

**BAYLR FOUR DEPARTURE (RNAV)**  
(BAYLR4.BOBBA) 13SEP18

DENVER, COLORADO  
ROCKY MOUNTAIN METROPOLITAN (BJC)

SW-1, 10 OCT 2019 to 07 NOV 2019

SW-1, 10 OCT 2019 to 07 NOV 2019