

# DENVER ONE DEPARTURE

AL-5612 (FAA)

ROCKY MOUNTAIN METROPOLITAN (BJC)

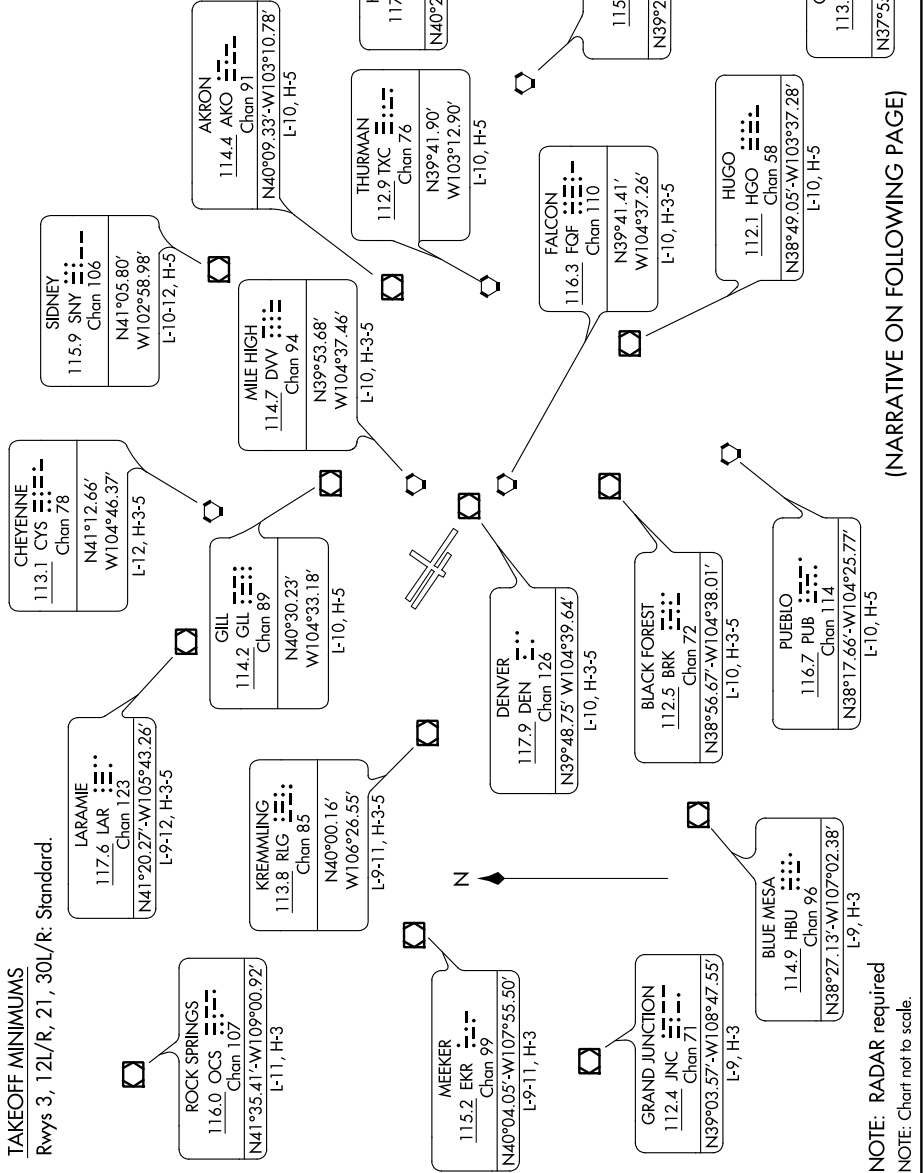
DENVER, COLORADO

610Z MON Z 07 OCT 2019 '1-MS

### TAKEOFF MINIMUMS

Rwys 3, 12L/R, 21, 30L/R: Standard.

ATIS  
126.25  
CINC DEL  
132.6  
DENVER DEP CON  
126.1 360.75



(NARRATIVE ON FOLLOWING PAGE)

NOTE: RADAR required  
NOTE: Chart not to scale.

SW-1, 10 OCT 2019 to 07 NOV 2019

# DENVER ONE DEPARTURE

DENVER, COLORADO

ROCKY MOUNTAIN METROPOLITAN (BJC)