

(EPKEE5.WEEDS) 18200

EPKEE FIVE DEPARTURE (RNAV)

ROCKY MOUNTAIN METROPOLITAN (BJC)
AL-5612 (FAA) DENVER, COLORADO

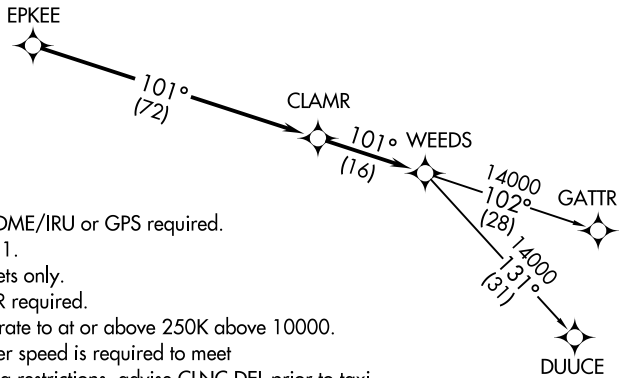
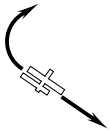
ATIS
126.25
CLNC DEL
132.6
DENVER DEP CON
126.1 360.75

**TOP ALTITUDE:
FL230**

TAKEOFF MINIMUMS

Rwys 3, 21: NA-ATC.

Rwys 12R, 12L, 30R, 30L: Standard.



NOTE: DME/DME/IRU or GPS required.

NOTE: RNAV 1.

NOTE: Turbojets only.

NOTE: RADAR required.

NOTE: Accelerate to at or above 250K above 10000.

If slower speed is required to meet crossing restrictions, advise CLNC DEL prior to taxi.

NOTE: Chart not to scale.



DEPARTURE ROUTE DESCRIPTION

TAKEOFF RUNWAYS 12L, 12R: Climb heading between 150° CCW 350° as assigned by ATC. Thence. . . .

TAKEOFF RUNWAYS 30L, 30R: Climbing right turn heading between 350° CW 113° as assigned by ATC. Thence. . . .

. . . .expect RADAR vectors to EPKEE, then on depicted route to WEEDS, then on (transition). Maintain FL230 or filed lower altitude, expect higher filed altitude 10 minutes after departure.

DUUCE TRANSITION (EPKEE5.DUUCE)

GATTR TRANSITION (EPKEE5.GATTR)

EPKEE FIVE DEPARTURE (RNAV)
(EPKEE5.WEEDS) 19JUL18

DENVER, COLORADO
ROCKY MOUNTAIN METROPOLITAN (BJC)

SW-1, 10 OCT 2019 to 07 NOV 2019

SW-1, 10 OCT 2019 to 07 NOV 2019