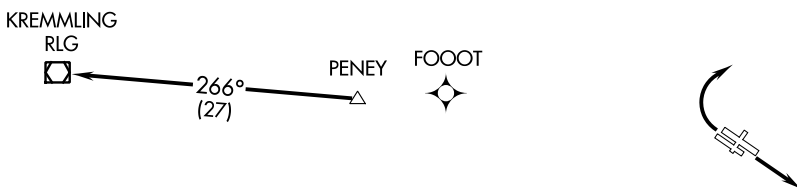


**TOP ALTITUDE:
FL230**

ATIS
126.25
CLNC DEL
132.6
DENVER DEP CON
126.1 360.75



TAKEOFF MINIMUMS

Rwys 3, 21: NA-ATC.

Rwys 12L/R, 30L/R: Standard with minimum climb of 250' per NM to 16000.

NOTE: DME/DME/IRU or GPS required.

NOTE: RNAV 1

NOTE: Turbojets only.

NOTE: Accelerate to at or above 250K above 10000. If slower speed is required to meet crossing restrictions advise CLNC DEL prior to taxi.

NOTE: RADAR required.

NOTE: Chart not to scale.



DEPARTURE ROUTE DESCRIPTION

TAKEOFF RUNWAYS 12L/R: Climb heading between 150° CCW 350° as assigned by ATC. Thence. . . .

TAKEOFF RUNWAYS 30L/R: Climbing right turn heading between 350° CW 113° as assigned by ATC. Thence. . . .

. . . .RADAR vectors to PENEY, then on depicted route to RLG VOR/DME. Maintain FL230 or filed lower altitude, expect higher filed altitude 10 minutes after departure.