


# ILS or LOC RWY 30R

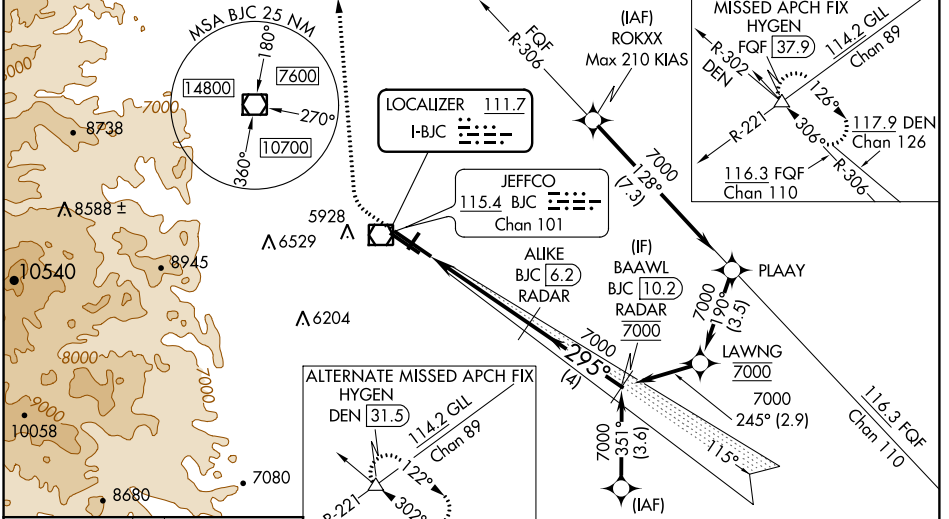
ROCKY MOUNTAIN METROPOLITAN (BJC)

LOC I-BJC	APP CRS	Rwy Idg	30R	30L
<b>111.7</b>	<b>295°</b>	TDZE	<b>9000</b>	<b>7002</b>
		Apt Elev	<b>5599</b>	<b>5628</b>
			<b>5673</b>	<b>5673</b>

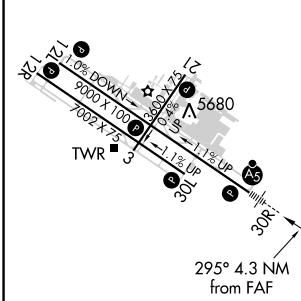
**⚠** DME from BJC VOR/DME. Simultaneous reception of I-BJC and BJC DME required. DME or **NA** RADAR required. When local altimeter setting not received, use Denver Intl altimeter setting and increase all DA 82 feet and all MDA 100 feet. Increase S-ILS 30R all Cats visibility 3/8 mile. Increase S-LOC 30R Cats B/C/D visibility 1/4 mile. Increase Sidestep R30L Cats A/B visibility 1/4 mile, Cats C/D visibility 1/2 mile and Circling Cat C visibility 1/4 mile. For inoperative MALS/R, increase S-ILS 30R all Cats visibility 1/2 mile and increase S-LOC 30R Cat C/D visibility 3/8 mile. For inoperative MALS/R, when using Denver Intl altimeter setting, increase S-ILS 30R all Cats visibility to 2 1/2 miles. Increase S-LOC 30R Cat B visibility to 1 1/4 mile and Cats C/D visibility to 2 1/2 miles. For inoperative MALS/R, when using Denver Intl altimeter setting, increase S-ILS 30R\* all Cats visibility to 1 mile.  
\*Missed approach requires a minimum climb of 240 feet per NM to 9700.

**MALS/R**  
  
**MISSED APPROACH:**  
 Climb to 6380 then climbing right turn to 10200 on heading 360° and on FQF VORTAC R-306 to HYGEN INT/FQF 37.9 DME and hold, continue climb-in-hold to 10200.

ATIS	DENVER APP CON	METRO TOWER *	GND CON	CLNC DEL
<b>126.25</b>	<b>126.1</b>	<b>118.6 (CTAF) 0 233.7</b>	<b>121.7</b>	<b>132.6</b>



ELEV 5673	<b>D</b>	TDZE 30R 5599
		TDZE 30L 5628



HIRL Rwy's 12L-30R **Ⓛ**  
 MIRL Rwy's 3-21 and 12R-30L **Ⓛ**  
 REIL Rwy's 12L, 12R and 30L **Ⓛ**

FAF to MAP 4.3 NM

Knots	60	90	120	150	180
Min:Sec	4:18	2:52	2:09	1:43	1:26

**C** CIRCLING

## RADAR OR GPS REQUIRED

6380	10200	FQF R-306	HYGEN	ALIKE BJC (6.2) RADAR	BAAWL BJC (10.2) RADAR
		hdg 360°			
			GS 3.00° TCH 52		
CATEGORY	A	B	C	D	
S-ILS 30R		* 5799-1/2		200 (200-1/2)	
S-ILS 30R		6124-1 3/8		525 (500-1 1/8)	
S-LOC 30R	6300-1/2 701 (700-1/2)		6300-1 1/8 701 (700-1 1/8)		
SIDESTEP 30L	6340-1	712 (700-1)		6340-2	6340-2 1/4
				712 (700-2)	712 (700-2 1/4)
	6340-1		6360-2		6860-3
			687 (700-2)		1187 (1200-3)