

WAAS CH <b>82707</b> <b>W30B</b>	APP CRS <b>295°</b>	Rwy Idg TDZE <b>9000</b> 5599 Apt Elev <b>5673</b>
--	------------------------	---

# RNAV (GPS) RWY 30R

ROCKY MOUNTAIN METROPOLITAN (B.J.C)

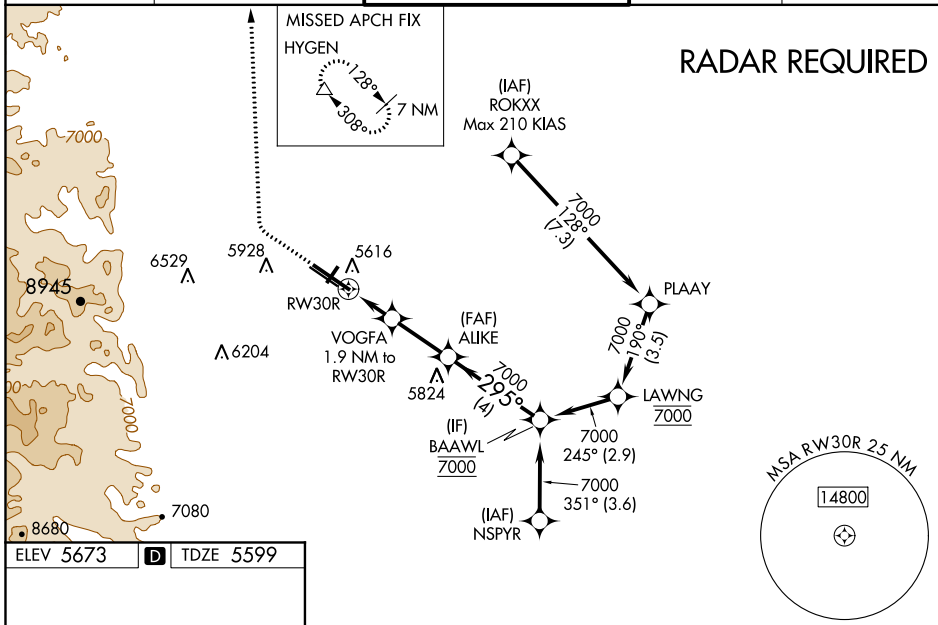
**NA** Baro-VNAV and VDP NA when using Denver Intl altimeter setting. For uncompensated Baro-VNAV systems, LNAV/VNAV NA below -26°C (-14°F) or above 47°C (116°F). DME/DME RNP-0.3 NA. When local altimeter setting not received, use Denver Intl altimeter setting and increase all DA 82 feet and all MDA 100 feet, increase LNAV/VNAV all Cats, LNAV Cat C/D and Circling Cat C visibility ¼ mile. For inoperative MALSR, increase LNAV/VNAV all Cats visibility to 1 ½ mile and LNAV Cat C/D visibility to 1 mile. For inoperative MALSR, when using Denver Intl altimeter setting, increase LPV all Cats visibility to 1 mile, LNAV/VNAV all Cats visibility to 1 ½ mile and LNAV Cat A/B visibility to 1 mile and Cat C/D visibility to 1 ½ mile.

MALSR



**MISSED APPROACH:** Climb to 6300 then climbing right turn to 10300 direct HYGEN and hold, continue climb-in-hold to 10300.

ATIS <b>126.25</b>	DENVER APP CON <b>126.1 360.75</b>	METRO TOWER ★ <b>118.6 (CTAF) 233.7</b>	GND CON <b>121.7</b>	CLNC DEL <b>132.6</b>
-----------------------	---------------------------------------	--	-------------------------	--------------------------



ELEV 5673 **D** TDZE 5599

HIRL Rwy 12L-30R **1**  
MIRL Rwy 3-21 and 12R-30L **1**  
REIL Rwy 12L, 12R and 30L **1**

	6300	10300	HYGEN	ALIJE	BAAWL
			VOGFA 1.9 NM to RWY 30R	7000	
	*LNAV only.		*1 NM to RWY 30R	295°	7000
			6220*	7000	GP 3.00° TCH 52
			1 NM	0.9	2.4 NM
			4 NM		
CATEGORY	A	B	C	D	
LPV DA		5799-½	200 (200-½)		
LNAV/VNAV DA		5900-⅝	301 (300-⅝)		
LNAV MDA	5940-½	341 (300-½)	5940-⅝	341 (300-⅝)	
<b>C</b> CIRCLING	6180-1 507 (600-1)	6240-1 567 (600-1)	6360-2 687 (700-2)	6860-3 1187 (1200-3)	

SW-1, 10 OCT 2019 to 07 NOV 2019

SW-1, 10 OCT 2019 to 07 NOV 2019