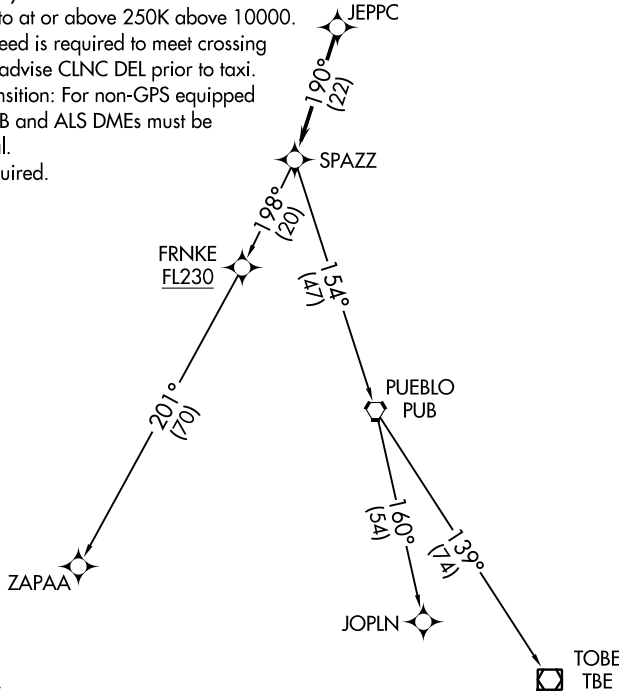


**TOP ALTITUDE:
FL230**

ATIS
126.25
CLNC DEL
132.6
DENVER DEP CON
126.1 360.75

TAKEOFF MINIMUMS
Rwys 3, 21: NA - ATC.
Rwys 12L/R, 30L/R: Standard.

- NOTE: DME/DME/IRU or GPS required.
- NOTE: RNAV 1.
- NOTE: Turbojets only.
- NOTE: Accelerate to at or above 250K above 10000.
If slower speed is required to meet crossing restrictions advise CLNC DEL prior to taxi.
- NOTE: ZAPAA transition: For non-GPS equipped aircraft PUB and ALS DMEs must be operational.
- NOTE: RADAR required.



NOTE: Chart not to scale.

DEPARTURE ROUTE DESCRIPTION

TAKEOFF RUNWAYS 12L/R: Climb heading between 150° CCW 350° as assigned by ATC. Thence

TAKEOFF RUNWAYS 30L/R: Climbing right turn heading between 350° CW 113° as assigned by ATC. Thence

. . . .RADAR vectors to JEPPC, then as depicted. Maintain FL230 or filed lower altitude, expect higher filed altitude 10 minutes after departure.

- JOPLN TRANSITION (SPAZZ4.JOPLN)
- TOBE TRANSITION (SPAZZ4.TBE)
- ZAPAA TRANSITION (SPAZZ4.ZAPAA)

SW-1, 10 OCT 2019 to 07 NOV 2019

SW-1, 10 OCT 2019 to 07 NOV 2019