

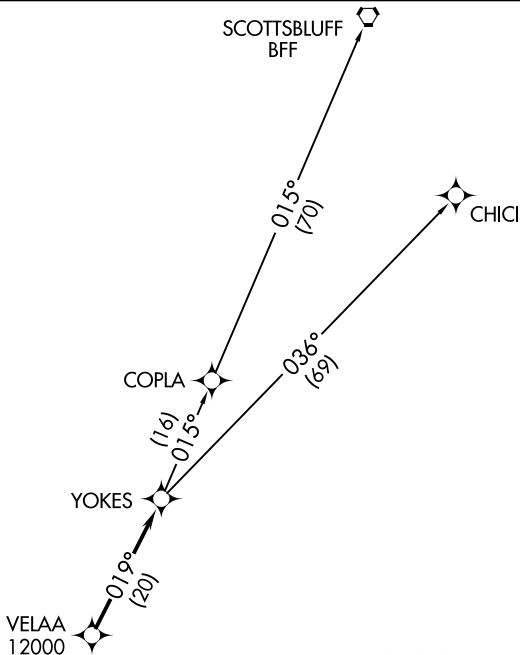
(YOKES6.YOKES) 18256

YOKES SIX DEPARTURE (RNAV)

AL-5612 (FAA) ROCKY MOUNTAIN METROPOLITAN (BJC)
DENVER, COLORADO

ATIS
126.25
CLNC DEL
132.6
DENVER DEP CON
126.1 360.75

**TOP ALTITUDE:
FL230**



TAKEOFF MINIMUMS:

Rwys 3, 21: NA-ATC.
Rwys 12L/R, 30L/R: Standard.

NOTE: DME/DME/IRU or GPS required.

NOTE: RNAV 1.

NOTE: Turbojets only.

NOTE: Accelerate to at or above 250K above 10000.
If slower speed is required to meet crossing
restrictions advise CLNC DEL prior to taxi.

NOTE: RADAR required.

NOTE: Chart not to scale.



DEPARTURE ROUTE DESCRIPTION

TAKEOFF RUNWAYS 12L/R: Climb heading between 150° CCW 350° as assigned by ATC, thence. . . .

TAKEOFF RUNWAYS 30L/R: Climbing right turn heading between 350° CW 113° as assigned by ATC, thence. . . .

. . . .RADAR vectors to VELAA, then as depicted. Maintain FL230 or filed lower altitude. Expect higher filed altitude 10 minutes after departure.

CHICI TRANSITION (YOKES6.CHICI)

SCOTTSLUFF TRANSITION (YOKES6.BFF)

YOKES SIX DEPARTURE (RNAV)
(YOKES6.YOKES) 13SEP18

DENVER, COLORADO
ROCKY MOUNTAIN METROPOLITAN (BJC)

SW-1, 10 OCT 2019 to 07 NOV 2019

SW-1, 10 OCT 2019 to 07 NOV 2019