

WAAS CH 86338 W10A	APP CRS 101°	Rwy Idg TDZE Apt Elev	4400 796 800
--	------------------------	-----------------------------	---

RNAV (GPS) RWY 10

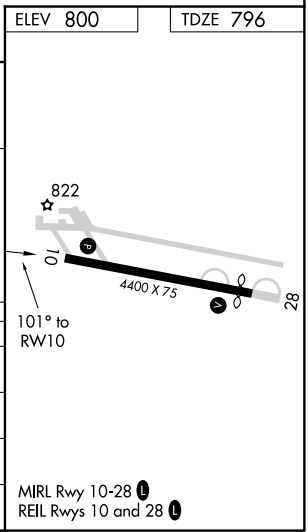
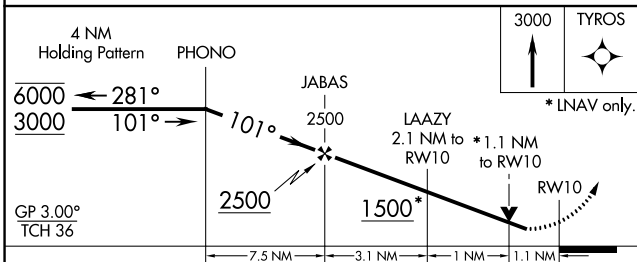
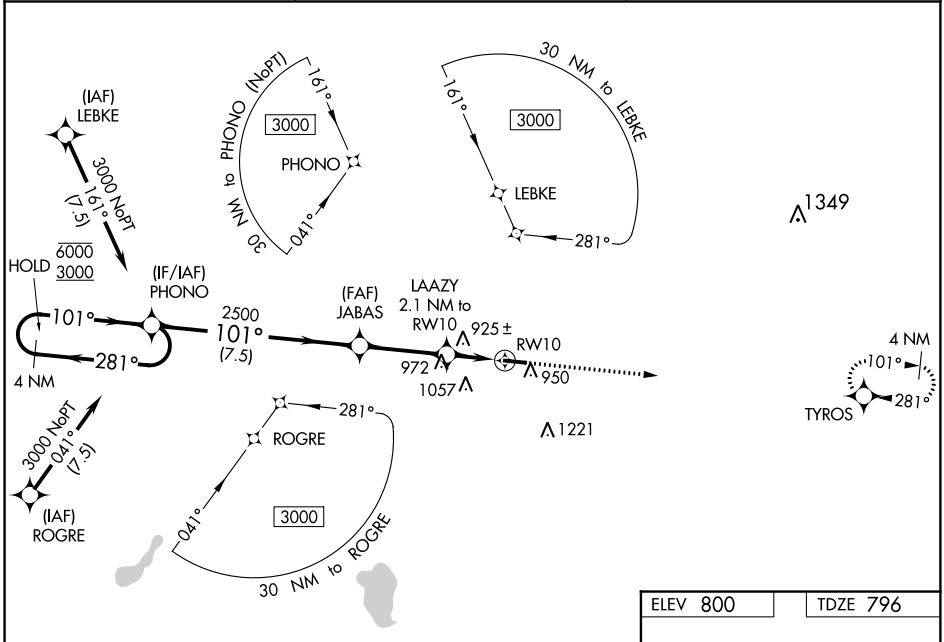
PLYMOUTH MUNI (C65)

RNP APCH.

▼ Baro-VNAV and VDP NA when using South Bend altimeter setting. Rwy 10 helicopter visibility reduction below $\frac{3}{4}$ SM NA. For uncompensated Baro-VNAV systems, LNAV/VNAV NA below -16°C or above 54°C . When local altimeter setting not received, use South Bend altimeter setting: increase LPV DA to 1136 feet, LNAV/VNAV DA to 1114 feet and all visibilities $\frac{1}{2}$ SM; increase all MDAs 60 feet and LNAV and Circling Cat C visibility $\frac{1}{4}$ SM.

MISSED APPROACH: Climb to 3000 direct TYROS and hold.

AWOS-3 133.025	SOUTH BEND APP CON * 132.05 257.8	UNICOM 122.975 (CTAF)
--------------------------	---	---------------------------------



CATEGORY	A	B	C	D
LPV DA	1088-1	292 (300-1)		NA
LNAV/VNAV DA	1066-1	270 (300-1)		NA
LNAV MDA	1180-1	384 (400-1)	1180- $\frac{1}{8}$ 384 (400- $\frac{1}{8}$)	NA
CIRCLING	1280-1 480 (500-1)	1360-1 560 (600-1)	1540-2 740 (800-2)	NA

EC-2, 10 OCT 2019 to 07 NOV 2019

EC-2, 10 OCT 2019 to 07 NOV 2019