

|  |                        |                             |   |
|--|------------------------|-----------------------------|---|
| WAAS<br>CH <b>90238</b><br><b>W28A</b> | APP CRS<br><b>281°</b> | Rwy Idg<br>TDZE<br>Apt Elev | <b>4100</b><br><b>796</b><br><b>800</b> |
|--|------------------------|-----------------------------|---|

# RNAV (GPS) RWY 28

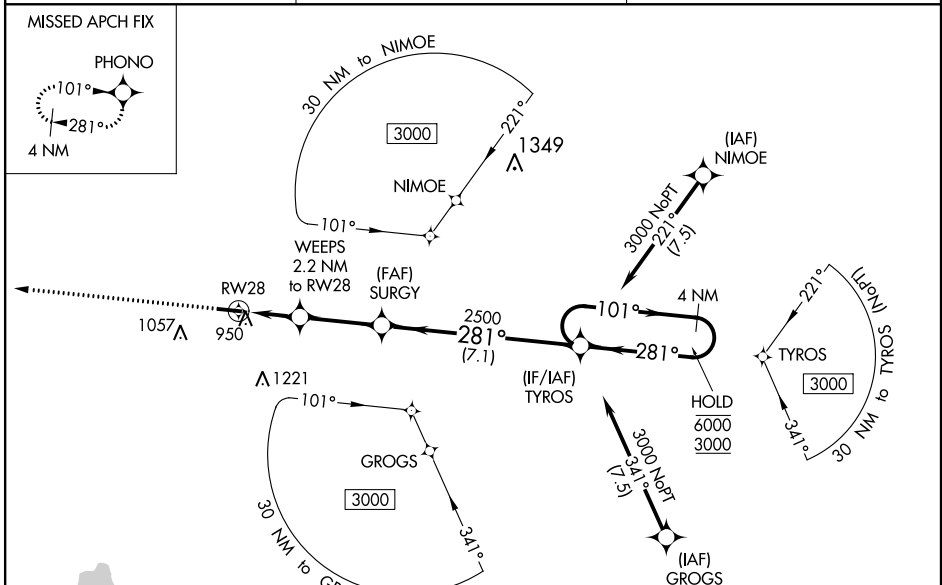
PLYMOUTH MUNI (C65)

RNP APCH.

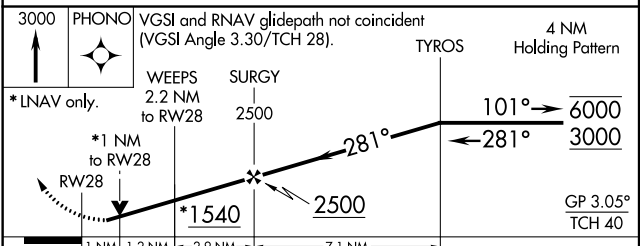
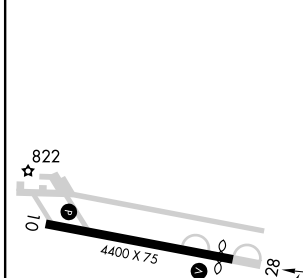
▼ Baro-VNAV and VDP NA when using South Bend altimeter setting. Rwy 28 helicopter visibility reduction below 3/4 SM NA. For uncompensated Baro-VNAV systems, LNAV/VNAV NA below -16°C or above 54°C. When local altimeter not received, use South Bend altimeter setting and increase LPV DA to 1147 feet and visibility all Cats 3/8 SM, LNAV/VNAV DA to 1225 feet and visibility all Cats 1/2 SM, all MDA 60 feet and LNAV and Circling Cat C visibility 1/4 SM.

MISSED APPROACH: Climb to 3000 direct PHONO and hold.

|                          |   |                                   |
|--------------------------|---|-----------------------------------|
| AWOS-3<br><b>133.025</b> | SOUTH BEND APP CON *<br><b>132.05 257.8</b> | UNICOM<br><b>122.975 (CTAF) 0</b> |
|--------------------------|---|-----------------------------------|



|          |          |
|----------|----------|
| ELEV 800 | TDZE 796 |
|----------|----------|



| CATEGORY          | A                     | B                     | C                           | D  |
|-------------------|-----------------------|-----------------------|-----------------------------|----|
| LPV DA            | 1099-1                |                       | 303 (300-1)                 | NA |
| LNAV/VNAV DA      | 1177-1¼               |                       | 381 (400-1½)                | NA |
| LNAV MDA          | 1260-1                | 464 (500-1)           | 1260-13/8<br>464 (500-13/8) | NA |
| <b>C</b> CIRCLING | 1280-1<br>480 (500-1) | 1360-1<br>560 (600-1) | 1540-2<br>740 (800-2)       | NA |

MIRL Rwy 10-28 0  
REIL Rwy 10 and 28 0

EC-2, 10 OCT 2019 to 07 NOV 2019

EC-2, 10 OCT 2019 to 07 NOV 2019