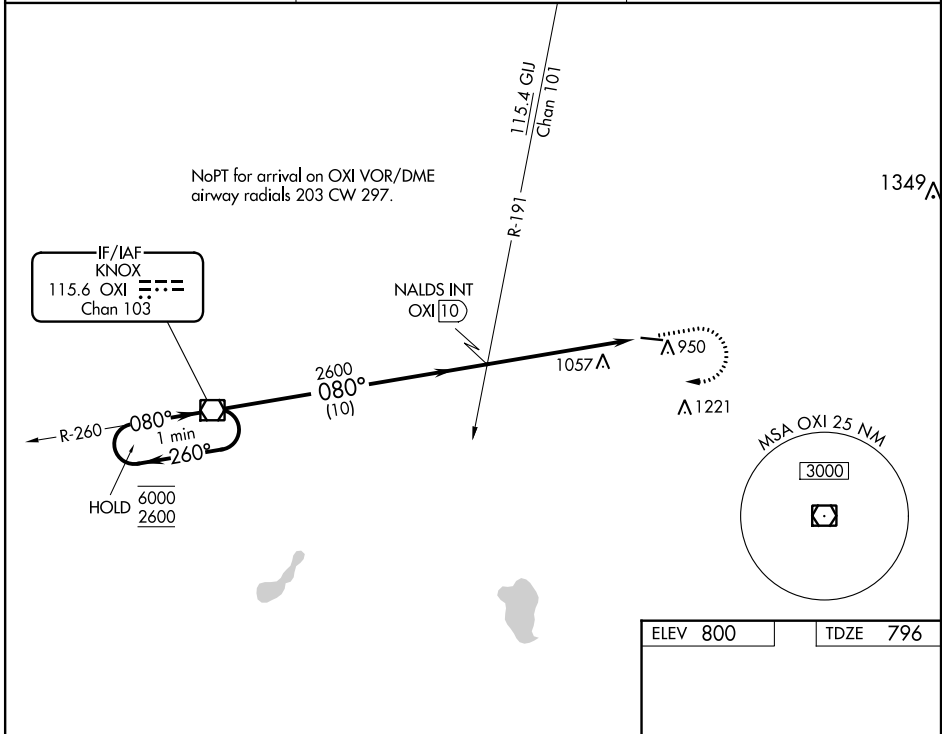


VOR/DME OXI <b>115.6</b> Chan <b>103</b>	APP CRS <b>080°</b>	Rwy Idg <b>4400</b> TDZE <b>796</b> Apt Elev <b>800</b>
--	------------------------	---

**VOR RWY 10**  
PLYMOUTH MUNI (C65)

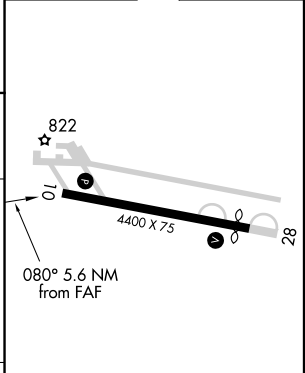
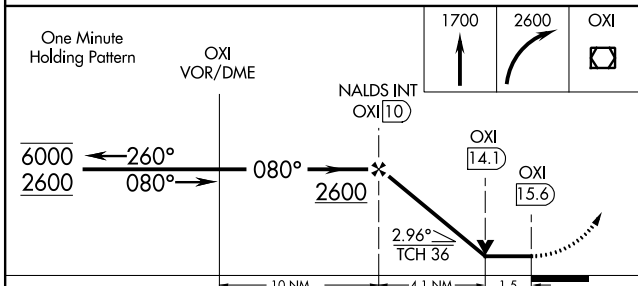
<p><b>▼</b> Rwy 10 helicopter visibility reduction below ¾ NA. VDP NA with South Bend altimeter setting. When local altimeter setting not received, use South Bend altimeter setting and increase all MDAs 60 feet and S-10 and Circling Cat C visibility ¼ SM.</p>	<p>MISSED APPROACH: Climb to 1700 then climbing right turn to 2600 direct OXI VOR/DME and hold.</p>	
<p>AWOS-3 <b>133.025</b></p>	<p>SOUTH BEND APP CON * <b>132.05 257.8</b></p>	<p>UNICOM <b>122.975 (CTAF) 0</b></p>



EC-2, 10 OCT 2019 to 07 NOV 2019

EC-2, 10 OCT 2019 to 07 NOV 2019

ELEV 800	TDZE 796
----------	----------



CATEGORY	A	B	C	D
S-10	1320-1	524 (600-1)	1320-1½ 524 (600-1½)	NA
<b>C</b> CIRCLING	1320-1 520 (600-1)	1360-1 560 (600-1)	1540-2 740 (800-2)	NA

MIRL Rwy 10-28 0	
REIL Rwys 10 and 28 0	
FAF to MAP 5.6 NM	
Knots	60 90 120 150 180
Min:Sec	5:36 3:44 2:48 2:14 1:52