

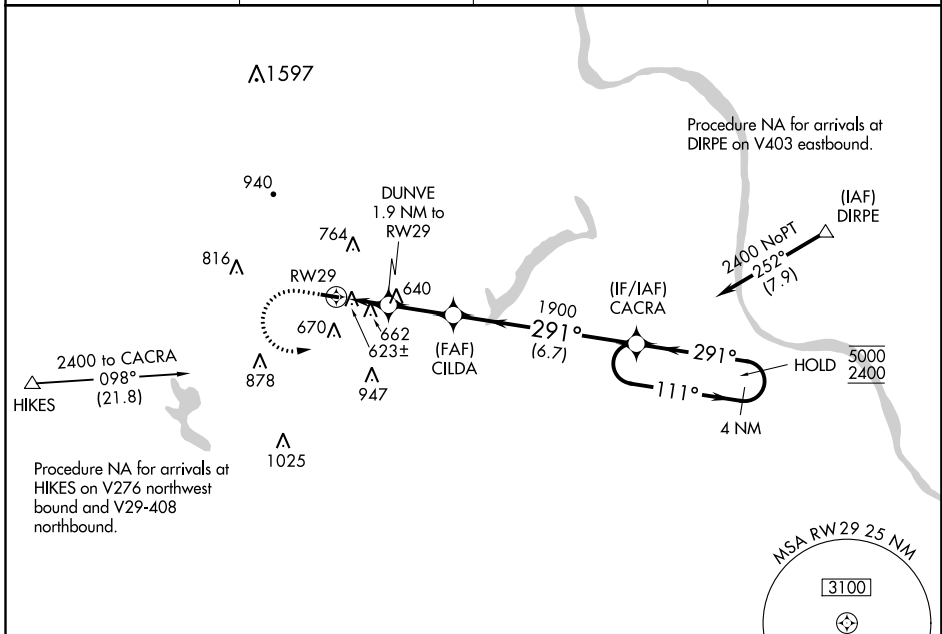
WAAS CH <b>61228</b> <b>W29A</b>	APP CRS <b>291°</b>	Rwy Idg TDZE Apt Elev	<b>3020</b> <b>525</b> <b>525</b>
--	------------------------	-----------------------------	---

# RNAV (GPS) RWY 29

QUAKERTOWN (UKT)

RNP APCH.	MISSED APPROACH: Climb to 1000, then climbing left turn to 2400 direct CACRA and hold.
Procedure NA at night. Rwy 29 helicopter visibility reduction below 1 SM NA.	

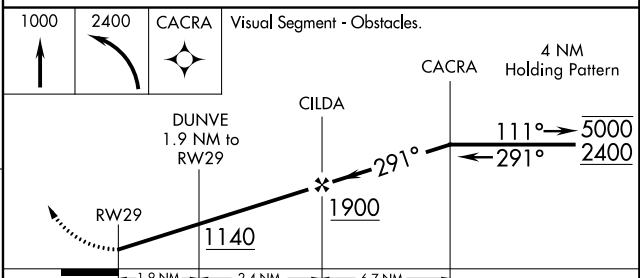
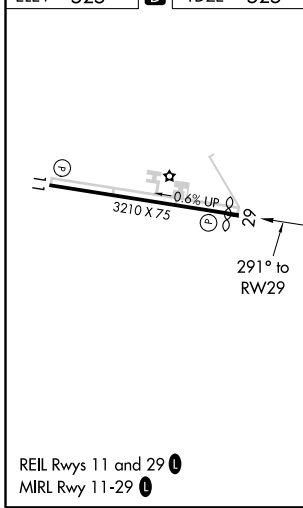
AWOS-3 <b>119.475</b>	PHILADELPHIA APP CON <b>123.8 291.7</b>	CLNC DEL <b>118.55</b>	UNICOM <b>122.725 (CTAF)</b>
--------------------------	--	---------------------------	---------------------------------



NE-4, 10 OCT 2019 to 07 NOV 2019

NE-4, 10 OCT 2019 to 07 NOV 2019

ELEV 525	<b>D</b>	TDZE 525
----------	----------	----------



CATEGORY	A	B	C	D
LP MDA	920-1	395 (400-1)	920-1 $\frac{1}{8}$ 395 (400-1 $\frac{1}{8}$ )	NA
LNAV MDA	960-1	435 (500-1)	960-1 $\frac{3}{8}$ 435 (500-1 $\frac{3}{8}$ )	NA
<b>C</b> CIRCLING	1040-1 515 (600-1)	1080-1 555 (600-1)	1220-2 695 (700-2)	NA