

(BAYLR4.BOBBA) 18256

BAYLR FOUR DEPARTURE (RNAV)

AL-5677 (FAA)

NORTHERN COLORADO RGNL (F'NL)
FORT COLLINS/LOVELAND, COLORADO

TOP ALTITUDE:
FL230

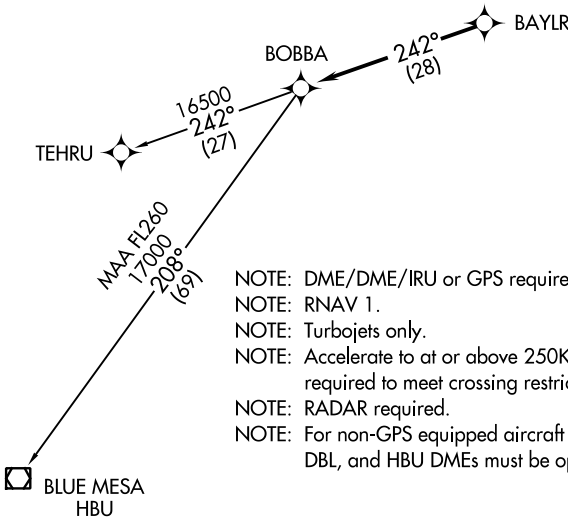
DENVER DEP CON
134.85 251.125



TAKEOFF MINIMUMS

Rwys 6, 24: NA - VFR runway.

Rwys 15, 33: Standard.



NOTE: DME/DME/IRU or GPS required.

NOTE: RNAV 1.

NOTE: Turbojets only.

NOTE: Accelerate to at or above 250K above 10000. If slower speed is required to meet crossing restrictions advise CLNC DEL prior to taxi.

NOTE: RADAR required.

NOTE: For non-GPS equipped aircraft on the Blue Mesa Transition, GLL, DBL, and HBU DMEs must be operational.

NOTE: Chart not to scale.



DEPARTURE ROUTE DESCRIPTION

TAKEOFF RUNWAY 15: Climb heading between 180° CCW 350° as assigned by ATC.

Thence. . . .

TAKEOFF RUNWAY 33: Climbing right turn heading between 350° CW 150° as assigned by ATC. Thence. . . .

. . . .RADAR vectors to BAYLR , then on depicted route to BOBBA, maintain FL230 or filed lower altitude, expect higher filed altitude 10 minutes after departure.

BLUE MESA TRANSITION (BAYLR4.HBU)

TEHRU TRANSITION (BAYLR4.TEHRU)

BAYLR FOUR DEPARTURE (RNAV)

(BAYLR4.BOBBA) 13SEP18

FORT COLLINS/LOVELAND, COLORADO
NORTHERN COLORADO RGNL (F'NL)

SW-1, 10 OCT 2019 to 07 NOV 2019

SW-1, 10 OCT 2019 to 07 NOV 2019