


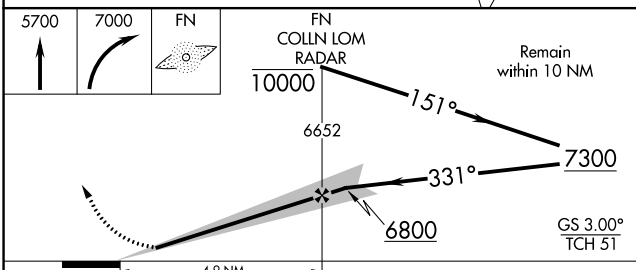
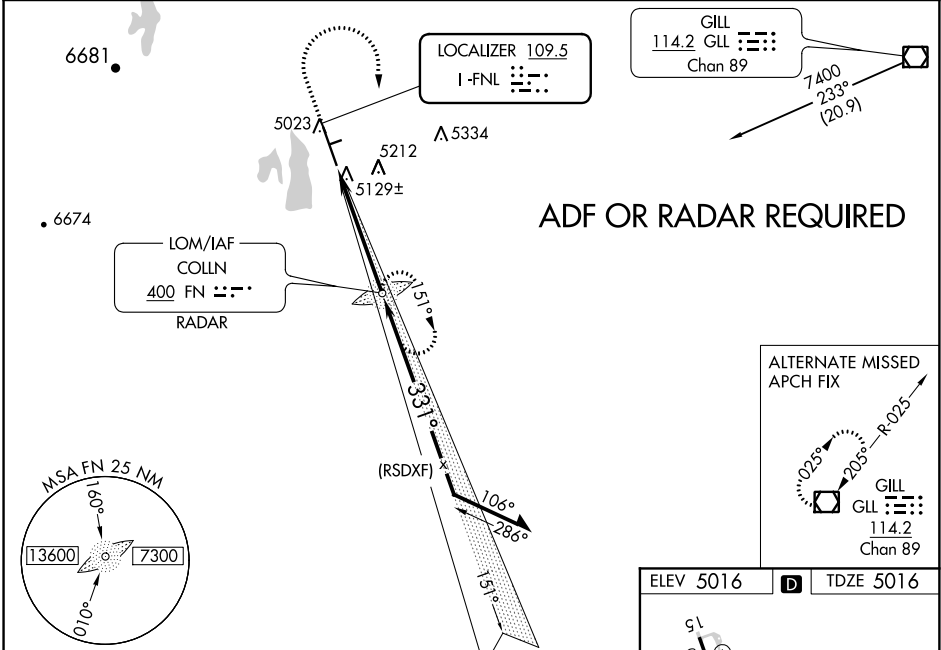
LOC I-FNL 109.5	APP CRS 331°	Rwy Idg TDZE Apt Elev	8500 5016 5016
---------------------------	------------------------	-----------------------------	---

ILS or LOC RWY 33

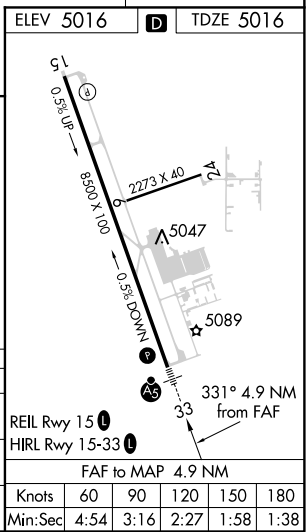
NORTHERN COLORADO RGNL (F'NL)

<p>NA Circling to Rwy 6/24 NA at night. ADF required. When local altimeter setting not received, use Denver Intl altimeter setting and increase all DA 147 feet and all MDA 160 feet. Increase S-LS 33 visibility all Cats ¼ mile, S-LOC 33 Cat C/D visibility ½ mile, and Circling Cat C/D visibility ¼ mile. For inop ALS, when using Denver Intl altimeter setting increase S-LS 33 visibility all Cats to 1 ¼ mile.</p>	<p>MALSR</p>  <p>MISSED APPROACH: Climb to 5700 then climbing right turn to 7000 direct COLLN LOM/RADAR and hold.</p>
--	--

AWOS-3PT 135.075	DENVER APP CON 134.85 251.125	CLNC DEL 120.25	UNICOM 122.7 (CTAF)
----------------------------	---	---------------------------	-------------------------------



CATEGORY	A	B	C	D
S-ILS 33	5216-½ 200 (200-½)			
S-LOC 33	5380-½ 364 (400-½)		5380-¾ 364 (400-¾)	
CIRCLING	5500-1 484 (500-1)		5520-1½ 564 (600-2)	



SW-1, 10 OCT 2019 to 07 NOV 2019

SW-1, 10 OCT 2019 to 07 NOV 2019