

(PIKES1.DEN) 18256
PIKES ONE DEPARTURE

AL-5677 (FAA)

NORTHERN COLORADO RGNL (FNL)
 FORT COLLINS/LOVELAND, COLORADO

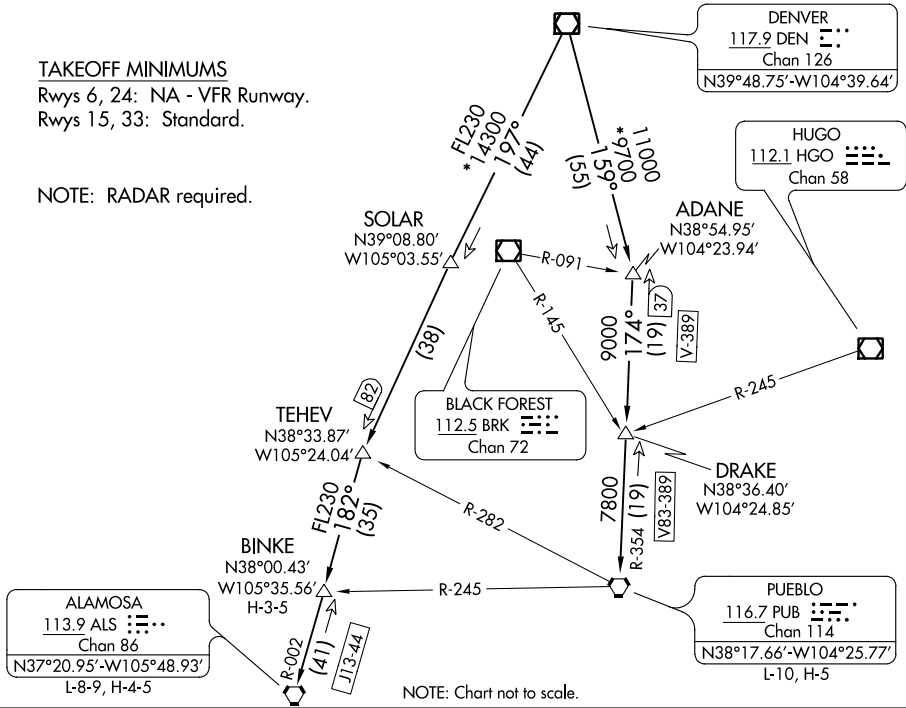
DENVER DEP CON
 134.85 251.125

**TOP ALTITUDE:
 ASSIGNED BY ATC**

TAKEOFF MINIMUMS

Rwys 6, 24: NA - VFR Runway.
 Rwys 15, 33: Standard.

NOTE: RADAR required.



SW-1, 10 OCT 2019 to 07 NOV 2019

SW-1, 10 OCT 2019 to 07 NOV 2019

DEPARTURE ROUTE DESCRIPTION

TAKEOFF RUNWAY 33: Climbing right turn to assigned altitude and heading between 350° CW 150° from DER, thence
TAKEOFF RUNWAY 15: Climb to assigned altitude and heading between 180° CCW 350° from end of runway, thence
RADAR vectors to assigned route. Expect filed altitude 10 minutes after departure.

LOST COMMUNICATIONS: If no transmissions are received within one minute after departure, maintain assigned heading until 7000 feet, then climb to filed altitude via direct DEN VOR/DME, thence via assigned transition. If filed altitude is above 10000 feet, cross DEN VOR/DME at or above 11000 feet.

- ALAMOSA TRANSITION (PIKES1.ALS):** From over DEN VOR/DME on DEN R-197 to TEHEV, then on ALS R-002 to ALS VORTAC.
- BINKE TRANSITION (PIKES1.BINKE):** From over DEN VOR/DME on DEN R-197 to TEHEV, then on ALS R-002 to BINKE.
- PUEBLO TRANSITION (PIKES1.PUB):** From over DEN VOR/DME on DEN R-159 to ADANE, then on PUB R-354 to PUB VORTAC.

PIKES ONE DEPARTURE
(PIKES1.DEN) 13SEP18

FORT COLLINS/LOVELAND, COLORADO
 NORTHERN COLORADO RGNL (FNL)