

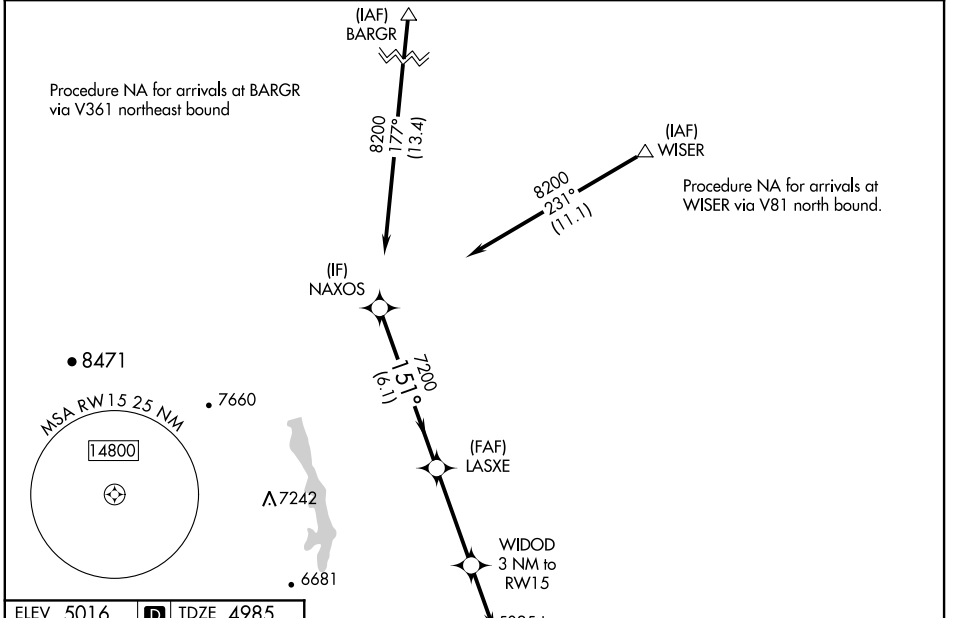
APP CRS <b>151°</b>	Rwy Idg <b>8500</b>
	TDZE <b>4985</b>
	Apt Elev <b>5016</b>

# RNAV (GPS) RWY 15

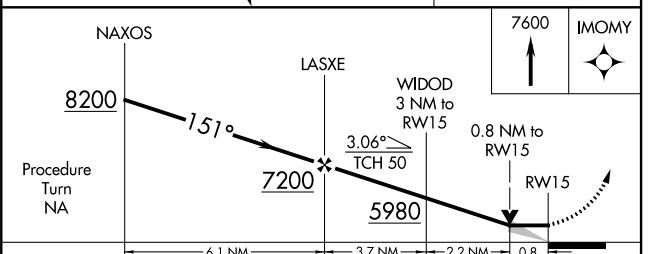
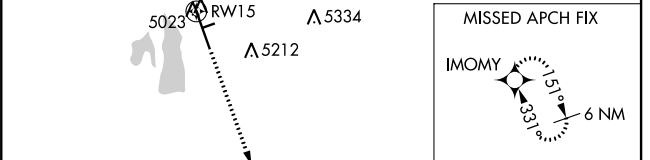
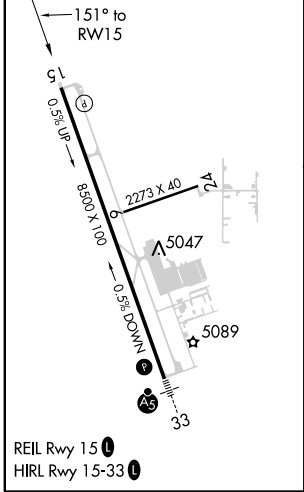
NORTHERN COLORADO RGNL (FNL)

RNP APCH.	MISSED APPROACH: Climb to 7600 direct IMOMY and hold.
⚠ VDP NA when using Denver Intl altimeter setting. ⚠ When local altimeter setting not received, use Denver Intl altimeter setting and increase all MDA 160 feet and visibility Cat C and D 3/8 SM.	

AWOS-3PT <b>135.075</b>	DENVER APP CON <b>134.85 251.125</b>	CINC DEL <b>120.25</b>	UNICOM <b>122.7 (CTAF) 0</b>
----------------------------	---	---------------------------	---------------------------------



ELEV 5016	D	TDZE 4985
-----------	---	-----------



CATEGORY	A	B	C	D
LNAV MDA	5280-1 295 (300-1)			

SW-1, 10 OCT 2019 to 07 NOV 2019

SW-1, 10 OCT 2019 to 07 NOV 2019