


WAAS CH <b>97511</b> <b>W33A</b>	APP CRS <b>331°</b>	Rwy Idg <b>8500</b> TDZE <b>5016</b> Apt Elev <b>5016</b>
--	------------------------	---

# RNAV (GPS) RWY 33

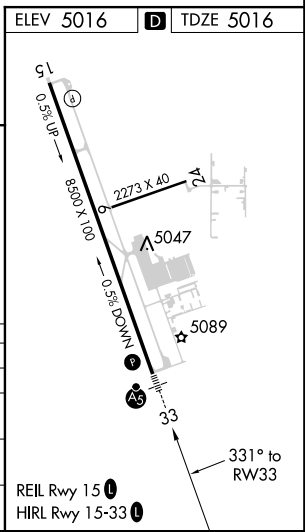
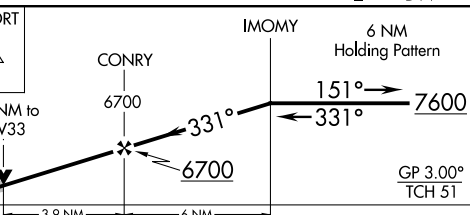
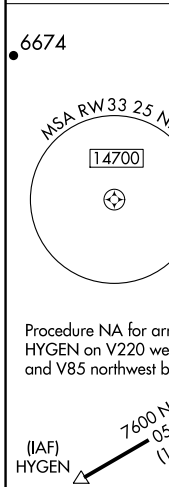
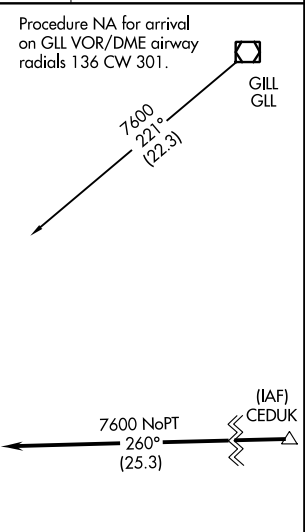
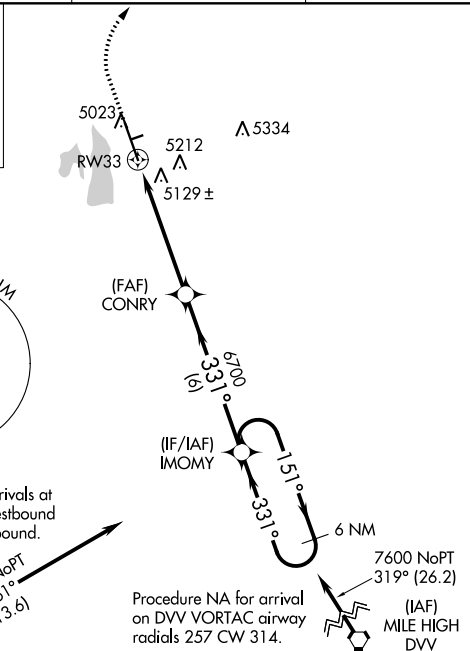
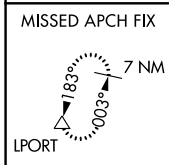
NORTHERN COLORADO RGNL (FNL)

**⚠** Circling to Rwy 6/24 NA at night. For uncompensated Baro-VNAV systems, LNAV/VNAV NA below -24°C (-11°F) or above 48°C (119°F). DME/DME RNP-0.3 NA. VDP and Baro-VNAV NA when using Denver Intl altimeter setting. For inop ALS when using Denver Intl altimeter setting, increase LPV all Cats visibility to 1½ mile. When local altimeter setting not received, use Denver Intl altimeter setting and increase all DA 148 feet and all MDA 160 feet; increase LPV all Cats visibility ¼ mile, LNAV/VNAV all Cats visibility ⅓ mile, LNAV and Circling Cats C/D visibility ½ mile.

**MALSR**  


**MISSED APPROACH:** Climb to 5600 then climbing right turn to 7400 direct LPORT and hold. When authorized by ATC, continue climb-in-hold to 8000.

AWOS-3PT <b>135.075</b>	DENVER APP CON <b>134.85 251.125</b>	CINC DEL <b>120.25</b>	UNICOM <b>122.7 (CTAF)</b>
----------------------------	---	---------------------------	-------------------------------



5600	7400	LPORT			
*LNAV only		*1.2 NM to RW33	CONRY	IMOMY	6 NM Holding Pattern
RW33			6700	7600	
1.2 NM		3.9 NM	6 NM		

CATEGORY	A	B	C	D
LPV DA		5216-½	200 (200-½)	
LNAV/VNAV DA		5430-⅞	414 (500-⅞)	
LNAV MDA	5460-½	444 (500-½)	5460-⅞	444 (500-⅞)
<b>C</b> CIRCLING	5500-1 484 (500-1)	5580-1 564 (600-1)	5580-1½ 564 (600-1½)	5760-2½ 744 (800-2½)

SW-1, 10 OCT 2019 to 07 NOV 2019

SW-1, 10 OCT 2019 to 07 NOV 2019