

(SPAZZ4.SPAZZ) 18256

# SPAZZ FOUR DEPARTURE (RNAV)

AL-5677 (FAA)

NORTHERN COLORADO RGNL (F'NL)  
FORT COLLINS/LOVELAND, COLORADO

DENVER DEP CON  
134.85 251.125

**TOP ALTITUDE:  
FL230**

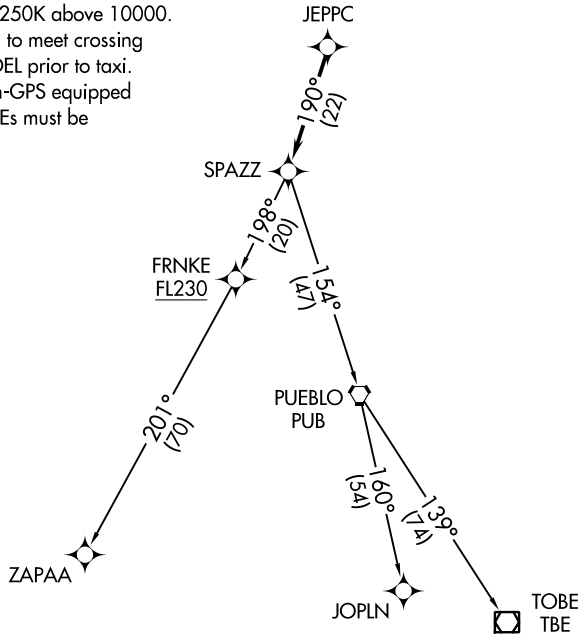
### TAKEOFF MINIMUMS

Rwys 6, 24: NA - VFR runway.

Rwys 15, 33: Standard.



- NOTE: DME/DME/IRU or GPS required.
- NOTE: RNAV 1.
- NOTE: Turbojets only.
- NOTE: Accelerate to at or above 250K above 10000.  
If slower speed is required to meet crossing restrictions advise CLNC DEL prior to taxi.
- NOTE: ZAPAA transition: For non-GPS equipped aircraft PUB and ALS DMEs must be operational.
- NOTE: RADAR required.



NOTE: Chart not to scale.



### DEPARTURE ROUTE DESCRIPTION

TAKEOFF RUNWAY 15: Climb heading between 180° CCW 350° as assigned by ATC. Thence . . .

TAKEOFF RUNWAY 33: Climbing right turn heading between 350° CW 150° as assigned by ATC. Thence . . .

. . .RADAR vectors to JEPPC, then as depicted. Maintain FL230 or filed lower altitude, expect higher filed altitude 10 minutes after departure.

JOPLN TRANSITION (SPAZZ4.JOPLN)

TOBE TRANSITION (SPAZZ4.TBE)

ZAPAA TRANSITION (SPAZZ4.ZAPAA)

# SPAZZ FOUR DEPARTURE (RNAV)

(SPAZZ4.SPAZZ) 13SEP18

FORT COLLINS/LOVELAND, COLORADO  
NORTHERN COLORADO RGNL (F'NL)

SW-1, 10 OCT 2019 to 07 NOV 2019

SW-1, 10 OCT 2019 to 07 NOV 2019