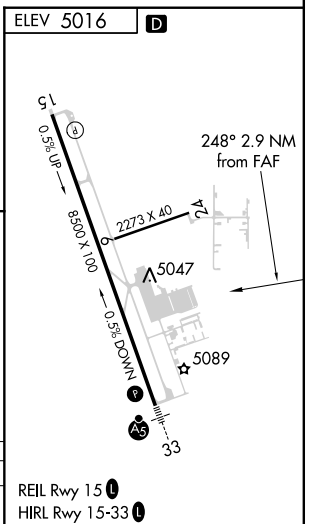
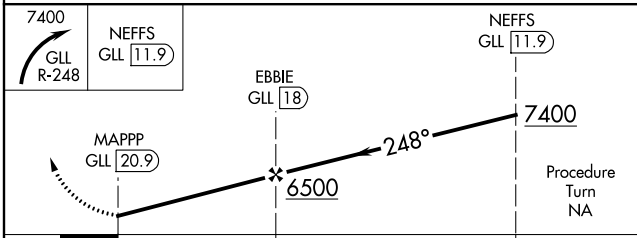
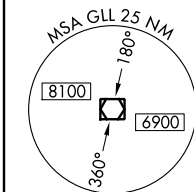
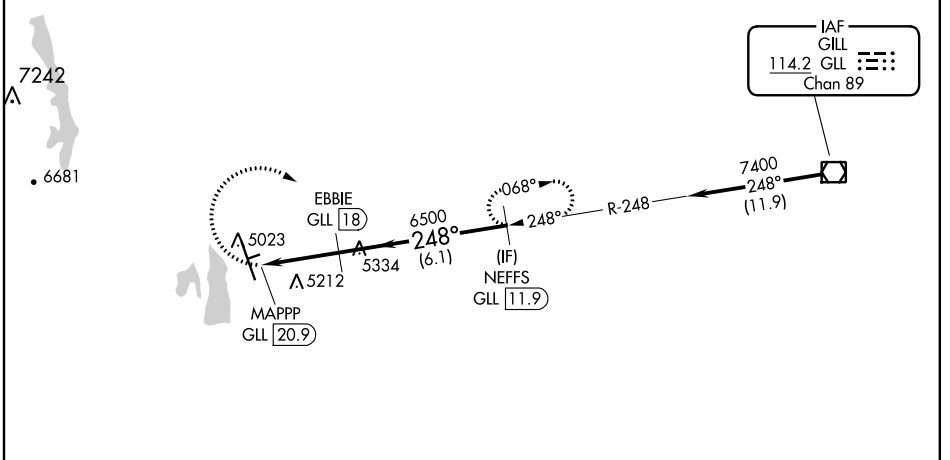


VOR/DME GLL 114.2 Chan 89	APP CRS 248°	Rwy Idg TDZE Apt Elev	N/A N/A 5016
---	------------------------	-----------------------------	---

VOR-A
NORTHERN COLORADO RGNL (FNL)

<p>⚠ Circling to Rwy 6/24 NA at night. When local altimeter setting not received, use Denver Intl altimeter setting and increase all MDA 160 feet and Cat C/D visibility ¼ mile. DME required.</p>		<p>MISSED APPROACH: Climbing right turn to 7400 via GLL VOR/DME R-248 to NEFFS/GLL 11.9 DME and hold.</p>	
AWOS-3PT 135.075	DENVER APP CON 134.85 251.125	CLNC DEL 120.25	UNICOM 122.7 (CTAF)

Procedure NA for arrivals on GLL VOR/DME airway radials 221 CW 301.



CATEGORY	A	B	C	D
CIRCLING	5500-1 484 (500-1)	5500-1¼ 484 (500-1¼)	5520-1½ 504 (600-1½)	5580-2 564 (600-2)

REIL Rwy 15 **Ⓛ**
HIRL Rwy 15-33 **Ⓛ**

SW-1, 10 OCT 2019 to 07 NOV 2019

SW-1, 10 OCT 2019 to 07 NOV 2019