

(YOKES6.YOKES) 18256

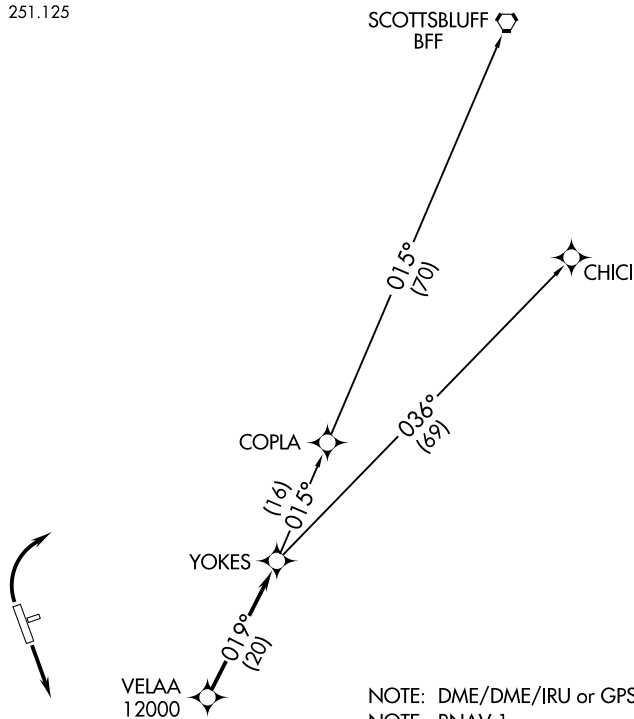
YOKES SIX DEPARTURE (RNAV)

AL-5677 (FAA)

NORTHERN COLORADO RGNL (F'NL)
FORT COLLINS/LOVELAND, COLORADO

DENVER DEP CON
134.85 251.125

**TOP ALTITUDE:
FL230**



- NOTE: DME/DME/IRU or GPS required.
- NOTE: RNAV 1.
- NOTE: Turbojets only.
- NOTE: Accelerate to at or above 250K above 10000.
If slower speed is required to meet crossing restrictions advise CLNC DEL prior to taxi.
- NOTE: RADAR required.

TAKEOFF MINIMUMS

Rwys 6, 24: NA-VFR runway.

Rwys 15, 33: Standard with minimum climb of 400' per NM to 8000.

NOTE: Chart not to scale.



DEPARTURE ROUTE DESCRIPTION

TAKEOFF RUNWAY 15: Climb heading between 180° CCW 350° as assigned by ATC, thence. . . .

TAKEOFF RUNWAY 33: Climbing right turn to heading between 350° CW 150° as assigned by ATC, thence. . . .

. . . .RADAR vectors to VELAA, then as depicted. Maintain FL230 or filed lower altitude. Expect higher filed altitude 10 minutes after departure.

CHICI TRANSITION (YOKES6.CHICI)

SCOTTSBLUFF TRANSITION (YOKES6.BFF)

YOKES SIX DEPARTURE (RNAV)

(YOKES6.YOKES) 13SEP18

FORT COLLINS/LOVELAND, COLORADO
NORTHERN COLORADO RGNL (F'NL)

SW-1, 10 OCT 2019 to 07 NOV 2019

SW-1, 10 OCT 2019 to 07 NOV 2019