

| | |
|------------------------|------------------------|
| APP CRS 268° | Rwy Idg 2998 |
| TDZE 260 | Apt Elev 260 |

RNAV (GPS) RWY 27

VIVIAN (3F4)

RNP APCH.

▽ Use Shreveport Rgnl altimeter setting; when not received, use Shreveport Downtown altimeter setting. Procedure NA at night. Rwy 27 helicopter visibility reduction below 1 SM NA.

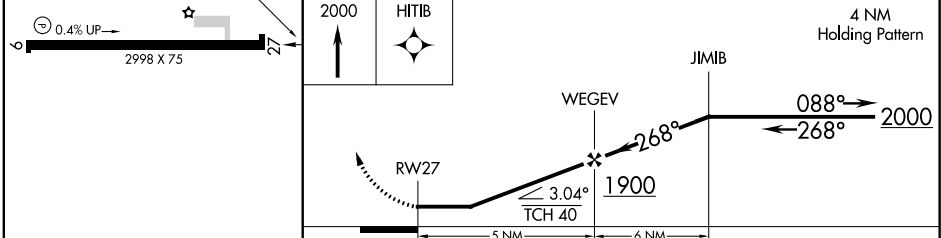
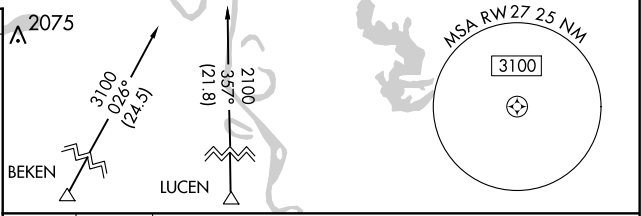
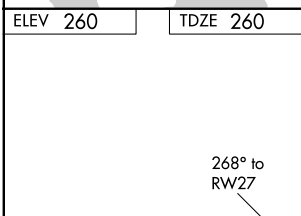
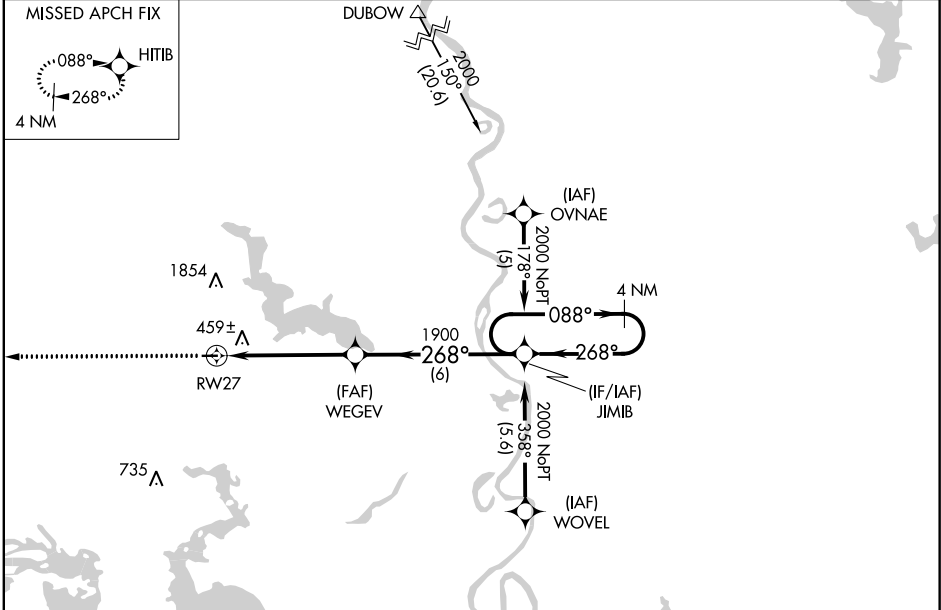
△ NA

MISSED APPROACH: Climb to 2000 direct HITIB and hold.

SHREVEPORT APP CON
119.9 335.55

GCO
135.075

UNICOM
122.8 (CTAF) 0



| | | | | |
|------------------------|---------------------|-------------|------------------------|----|
| MIRL Rwy 9-27 0 | REIL Rwy 9 0 | | | |
| CATEGORY | A | B | C | D |
| LNAV MDA | 860-1 | 600 (600-1) | 860-1¾ 600 (600-1¾) | NA |

SC-4, 10 OCT 2019 to 07 NOV 2019

SC-4, 10 OCT 2019 to 07 NOV 2019