

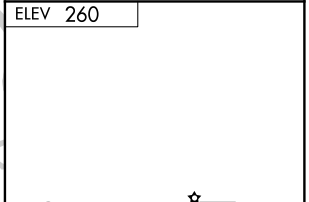
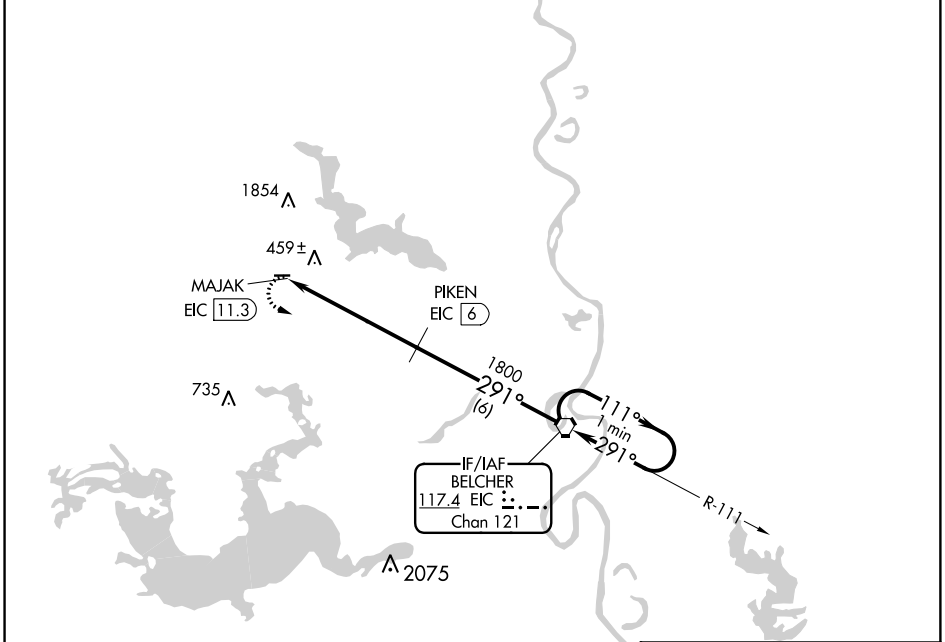
VORTAC EIC 117.4 Chan 121	APP CRS 291°	Rwy Idg TDZE Apt Elev	N/A N/A 260
--	------------------------	-----------------------------	--

VOR/DME-A

VIVIAN (3F4)

<p>▼ Circling NA north of Rwy 9-27. Use Shreveport Rgnl altimeter setting; when not received, use Shreveport Downtown altimeter setting. Procedure NA at night. Helicopter visibility reduction below 1 SM NA.</p> <p>▲ NA</p>	<p>MISSED APPROACH: Climbing left turn to 3000 direct EIC VORTAC and hold.</p>
--	---

SHREVEPORT APP CON 119.9 335.55	GCO 135.075	UNICOM 122.8 (CTAF) 0
---	-----------------------	---------------------------------



3000 EIC	MAJAK EIC 117.3	PIKEN EIC 6	EIC VORTAC	One Minute Holding Pattern
	5.3 NM	6 NM	111° →	← 291° 3000
				291° 5.3 NM from FAF

CATEGORY	A	B	C	D	MIRL Rwy 9-27 0 REIL Rwy 9 0
CIRCLING	860-1	600 (600-1)	880-1¾ 620 (700-1¾)	NA	

SC-4, 10 OCT 2019 to 07 NOV 2019

SC-4, 10 OCT 2019 to 07 NOV 2019