

# DUNNN TWO ARRIVAL (RNAV)

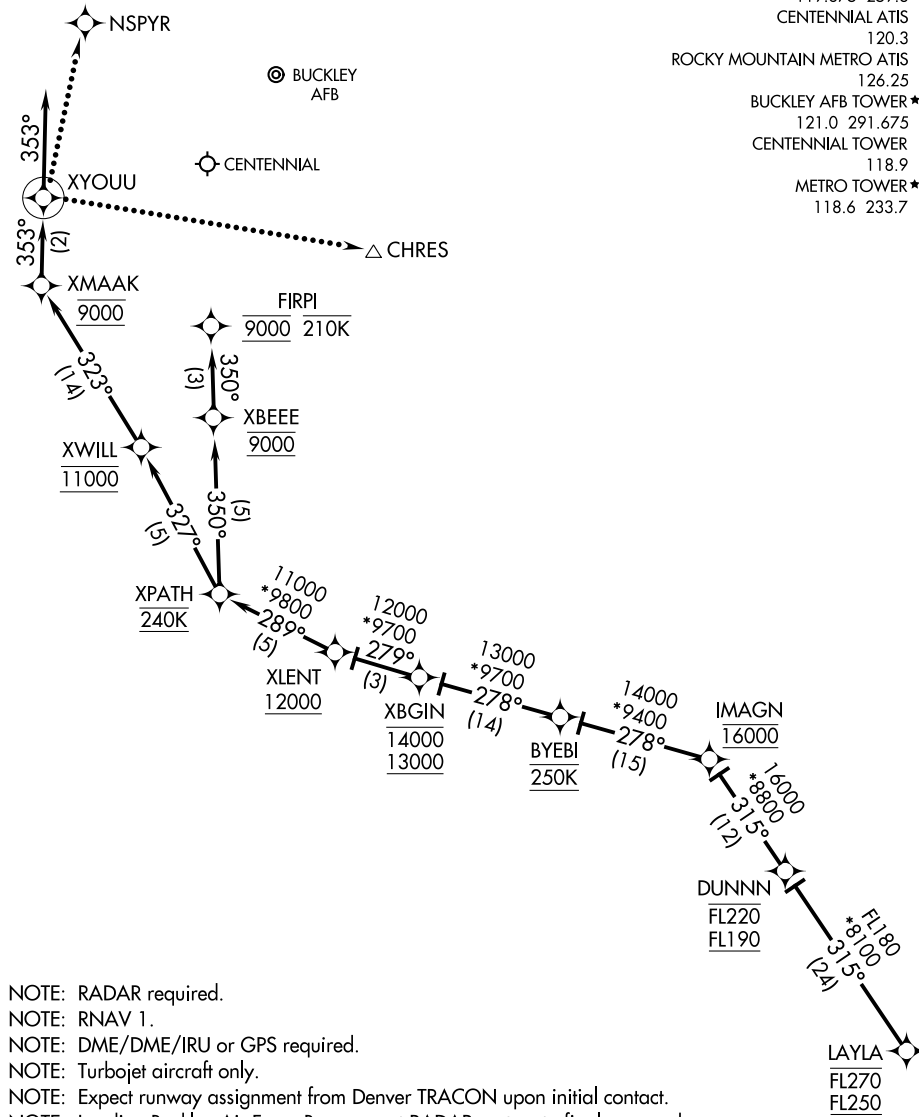
DENVER, COLORADO

ROCKY MOUNTAIN METROPOLITAN

- DENVER APP CON 128.45 251.075
- SPRINGS APP CON 118.5 239.025
- BUCKLEY AFB ATIS\* 119.675 259.3
- CENTENNIAL ATIS 120.3
- ROCKY MOUNTAIN METRO ATIS 126.25
- BUCKLEY AFB TOWER\* 121.0 291.675
- CENTENNIAL TOWER 118.9
- METRO TOWER\* 118.6 233.7

SW-1, 10 OCT 2019 to 07 NOV 2019

SW-1, 10 OCT 2019 to 07 NOV 2019



- NOTE: RADAR required.
- NOTE: RNAV 1.
- NOTE: DME/DME/IRU or GPS required.
- NOTE: Turbopjet aircraft only.
- NOTE: Expect runway assignment from Denver TRACON upon initial contact.
- NOTE: Landing Buckley Air Force Base expect RADAR vectors to final approach course.

NOTE: Chart not to scale.

(NARRATIVE ON FOLLOWING PAGE)

# DUNNN TWO ARRIVAL (RNAV)

DENVER, COLORADO