

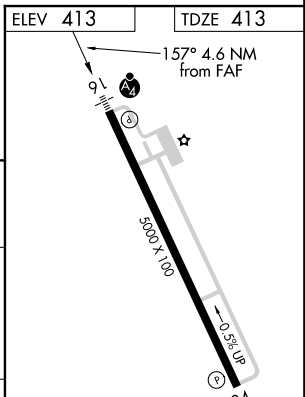
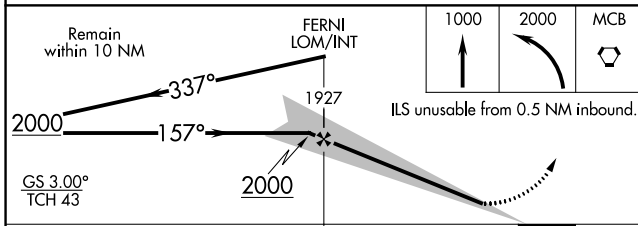
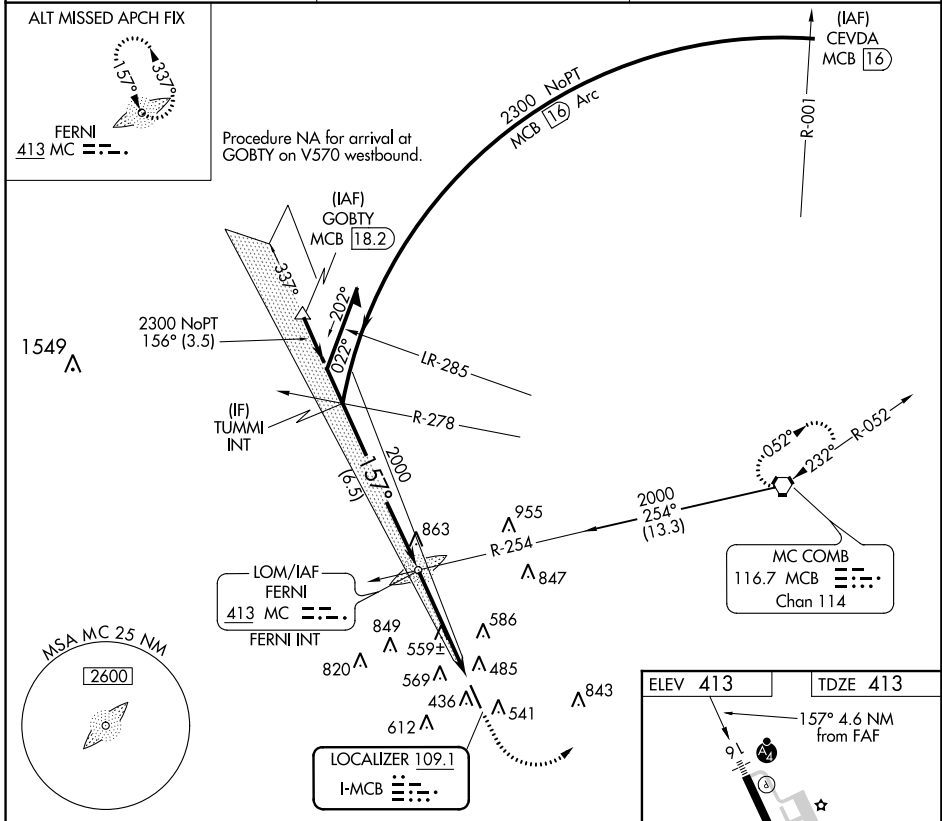
LOC I-MCB <b>109.1</b>	APP CRS <b>157°</b>	Rwy Idg TDZE Apt Elev	<b>5000</b> <b>413</b> <b>413</b>
---------------------------	------------------------	-----------------------------	---

# ILS or LOC RWY 16

MC COMB/PIKE COUNTY/JOHN E LEWIS FIELD (MCB)

<p><b>▼</b> Inop table does not apply to S-ILS 16 all Cats and S-LOC 16 Cats C and D.</p>	<p><b>MALSF</b></p>	<p>MISSED APPROACH: Climb to 1000 then climbing left turn to 2000 direct MCB VORTAC and hold.</p>
---	---------------------	---

ASOS <b>119.025</b>	HOUSTON CENTER <b>126.8 327.8</b>	UNICOM <b>123.05 (CTAF) 0</b>
------------------------	--------------------------------------	----------------------------------



CATEGORY	A	B	C	D	MIRL Rwy 16-34
S-ILS 16	632-3/4 219 (300-3/4)				FAF to MAP 4.1 NM
S-LOC 16	820-3/4	407 (500-3/4)	820-1 1/4	407 (500-1 1/4)	Knots 60 90 120 150 180
CRCLING	880-1	467 (500-1)	940-1 1/2	1160-2 1/2	Min:Sec 4:06 2:44 2:03 1:38 1:22
			527 (600-1 1/2)	747 (800-2 1/2)	

SC-4, 10 OCT 2019 to 07 NOV 2019

SC-4, 10 OCT 2019 to 07 NOV 2019