

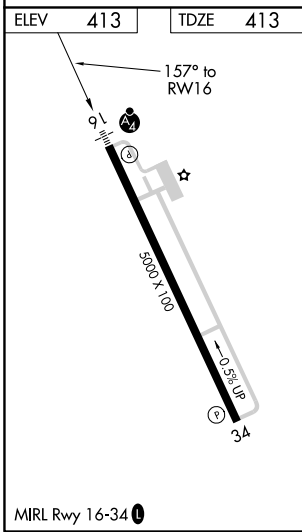
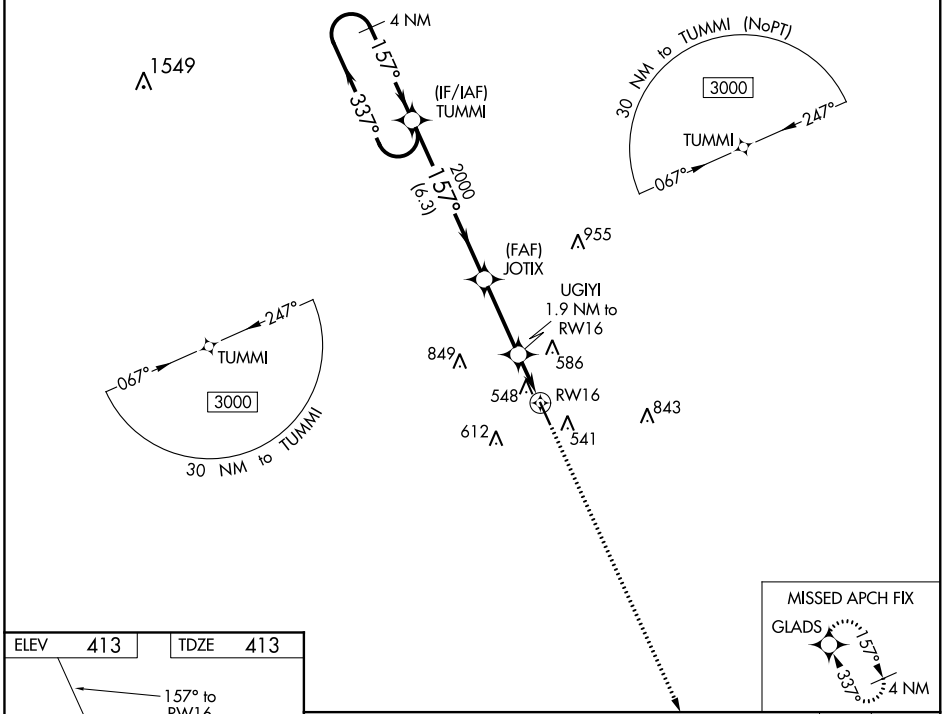
WAAS CH 72824 W16A	APP CRS 157°	Rwy Idg TDZE Aprt Elev	5000 413 413
--	------------------------	------------------------------	---

RNAV (GPS) RWY 16

MCCOMB-PIKE COUNTY-JOHN E. LEWIS FIELD (MCB)

RNP APCH.	MALSF	MISSED APPROACH: Climb to 3000 direct GLADS and hold.
<p>For uncompensated Baro-VNAV systems, LNAV/VNAV NA below -4°C (25°F) or above 54°C (130°F). Inop table does not apply to LPV all Cats. For inop ALS, increase LNAV/VNAV all Cats visibility to 7/8 SM.</p>		

ASOS 119.025	HOUSTON CENTER 126.8 327.8	UNICOM 123.05 (CTAF) 0
------------------------	--------------------------------------	----------------------------------



4 NM Holding Pattern		TUMMI	JOTIX	UGIYI	RWY 16
3000	← 337°	→ 157°	157°	1.9 NM to RWY 16	*1.1 NM to RWY 16
GP 3.00°	TCH 42	2000	*1060	0.8	1.1
		6.3 NM	3 NM	0.8	1.1
CATEGORY	A	B	C	D	
LPV DA		615-3/4	202 (300-3/4)		
LNAV/VNAV DA		709-3/4	296 (300-3/4)		
LNAV MDA	800-3/4	387 (400-3/4)	800-7/8	387 (400-7/8)	
C CIRCLING	880-1	467 (500-1)	940-1 1/2 527 (600-1 1/2)	1160-2 1/2 747 (800-2 1/2)	

RNAV (GPS) RWY 16

SC-4, 10 OCT 2019 to 07 NOV 2019

SC-4, 10 OCT 2019 to 07 NOV 2019