

VORTAC MCB <b>116.7</b> Chan <b>114</b>	APP CRS <b>233°</b>	Rwy Idg TDZE Apt Elev	<b>N/A</b> <b>N/A</b> <b>413</b>
---	------------------------	-----------------------------	--

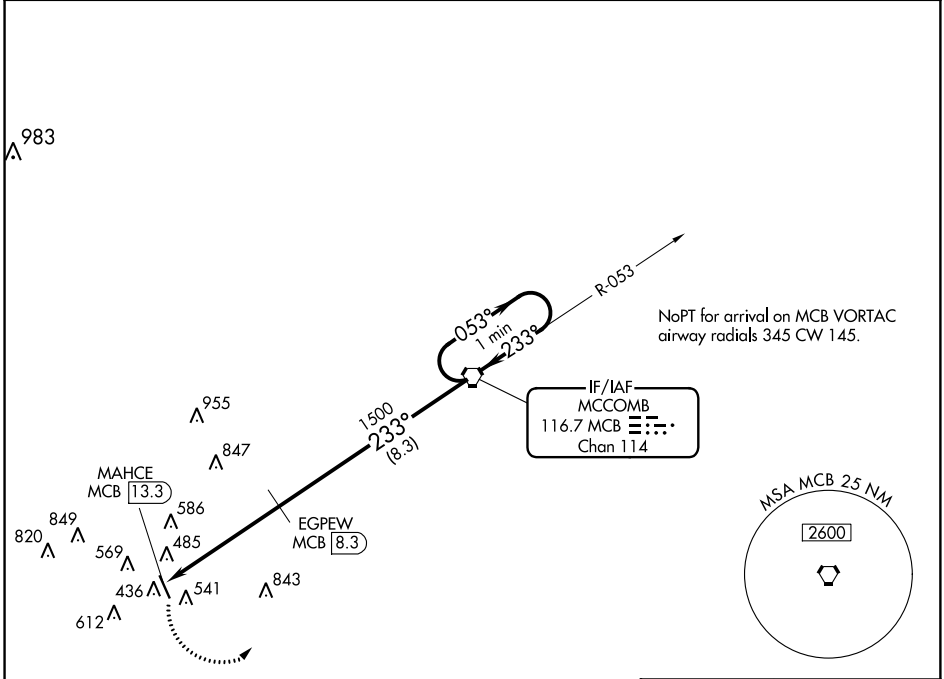
# VOR/DME-A

MCCOMB-PIKE COUNTY-JOHN E. LEWIS FIELD (MCB)

**⚠** When local altimeter setting not received, use Natchez altimeter setting and increase MDA 140 feet and Cat C and D visibility ¼ mile.

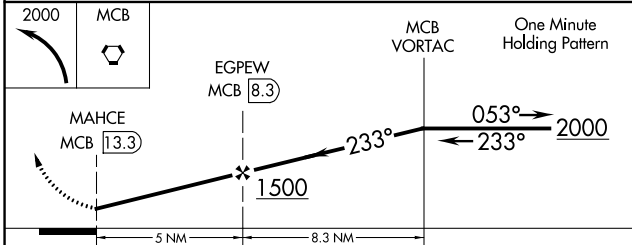
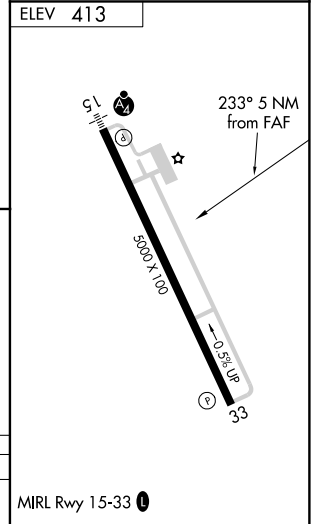
**⚠** MISSED APPROACH: Climbing left turn to 2000 direct MCB VORTAC and hold

ASOS <b>119.025</b>	HOUSTON CENTER <b>126.8 327.8</b>	UNICOM <b>123.05 (CTAF) 0</b>
------------------------	--------------------------------------	----------------------------------



SC-4, 10 OCT 2019 to 07 NOV 2019

SC-4, 10 OCT 2019 to 07 NOV 2019



CATEGORY	A	B	C	D
CIRCLING	920-1	507 (600-1)	920-1½ 507 (600-1½)	980-2 567 (600-2)