

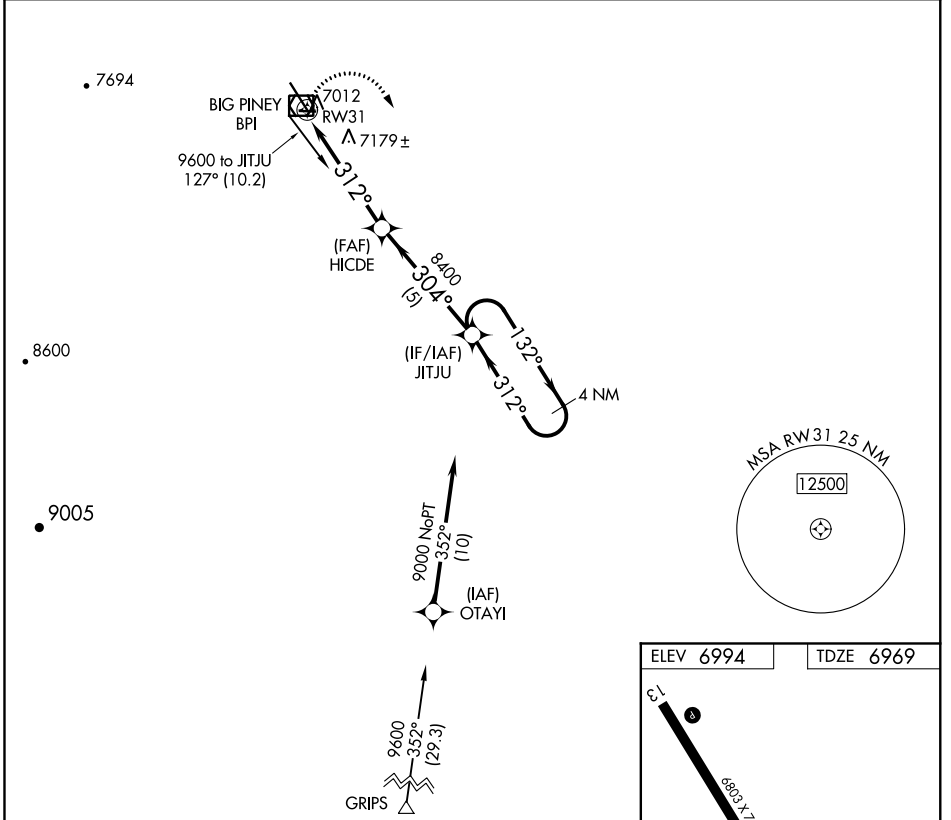
APP CRS 312°	Rwy Idg 6803
	TDZE 6969
	Apt Elev 6994

RNAV (GPS) RWY 31

MILEY MEMORIAL FIELD (BPI)

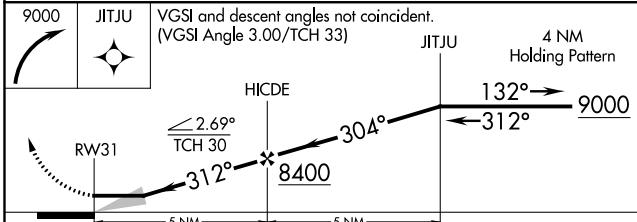
RNP APCH. ▼ Circling NA to Rwys 8 and 26.	MISSED APPROACH: Climbing right turn to 9000 direct JITJU and hold.
--	---

ASOS 135.225	SALT LAKE CENTER 128.35 239.25	CASPER RADIO 122.3	UNICOM 122.8 (CTAF)	122.70
------------------------	--	------------------------------	-------------------------------	---------------



NW-1, 10 OCT 2019 to 07 NOV 2019

NW-1, 10 OCT 2019 to 07 NOV 2019



CATEGORY	A	B	C	D
LNVA MDA	7440-1	471 (500-1)	7440-1½ 471 (500-1½)	7440-1½ 471 (500-1½)
CIRCLING	7460-1 466 (500-1)	7560-1 566 (600-1)	7560-1½ 566 (600-1½)	7560-2 566 (600-2)

