

VORTAC MXE <b>113.2</b> Chan <b>79</b>	APP CRS <b>230°</b>	Rwy Idg <b>3695</b> TDZE <b>436</b> Apt Elev <b>436</b>
--	------------------------	---

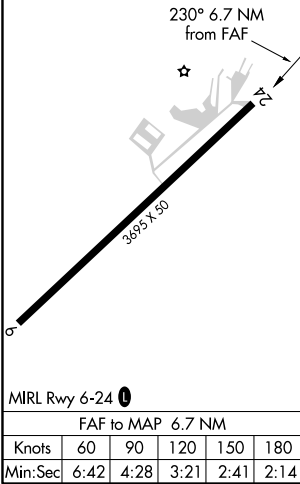
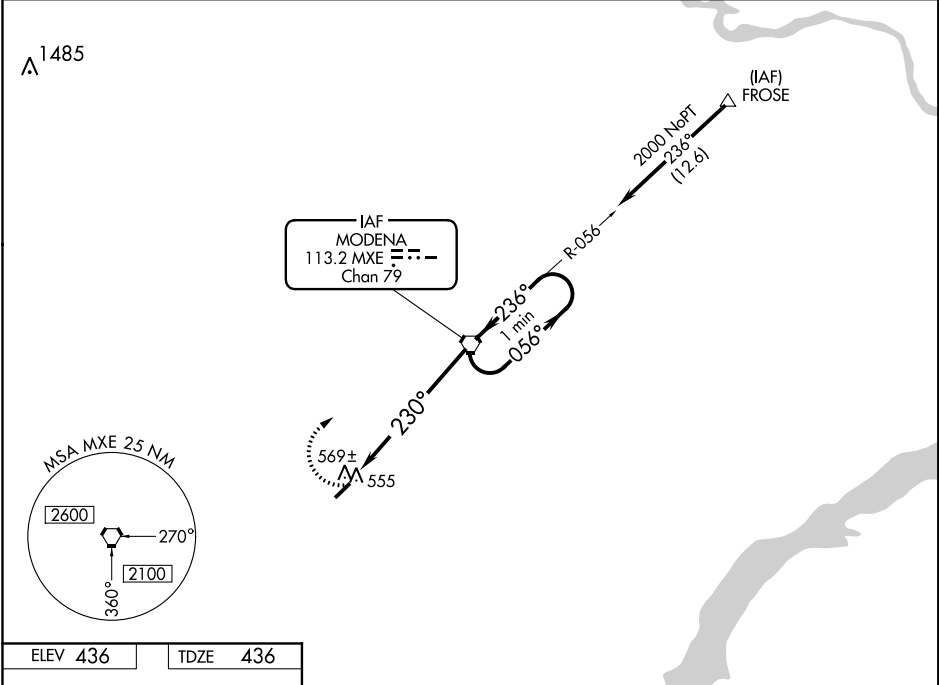
# VOR RWY 24

NEW GARDEN (N57)

**NA** Obtain local altimeter on CTAF; when not received, use Wilmington altimeter setting. Procedure NA at night. Helicopter visibility reduction below 1 SM NA.

MISSED APPROACH: Climbing right turn to 2000 direct MXE VORTAC and hold.

PHILADELPHIA APP CON <b>124.35 319.15</b>	CLNC DEL <b>125.6</b>	UNICOM <b>123.05 (CTAF) 0</b>
--	--------------------------	----------------------------------



CATEGORY	A	B	C	D
S-24	940-1	504 (600-1)	940-1½ 504 (600-1½)	NA
CIRCLING	960-1	524 (600-1)	960-1½ 524 (600-1½)	NA
WILMINGTON ALTIMETER SETTING MINIMUMS				
S-24	1020-1	584 (600-1)	1020-1½ 584 (600-1½)	NA
CIRCLING	1040-1	604 (700-1)	1040-1¾ 604 (700-1¾)	NA

NE-4, 10 OCT 2019 to 07 NOV 2019

NE-4, 10 OCT 2019 to 07 NOV 2019