

WAAS CH 49200 W12A	APP CRS 116°	Rwy Idg TDZE Apt Elev	4001 193 193
--	------------------------	-----------------------------	---

RNAV (GPS) RWY 12

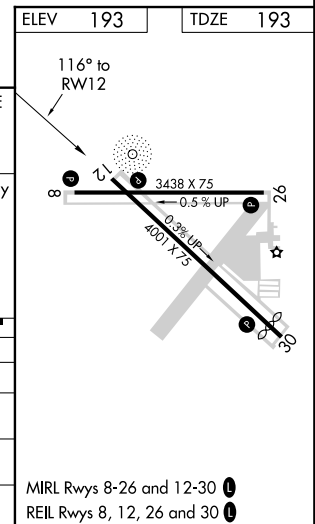
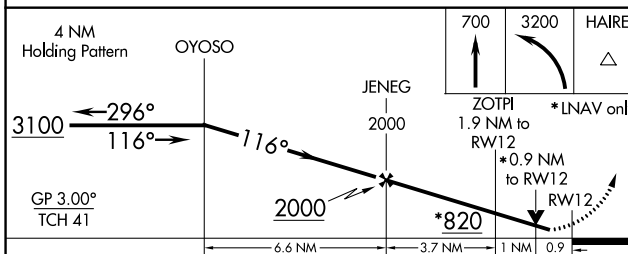
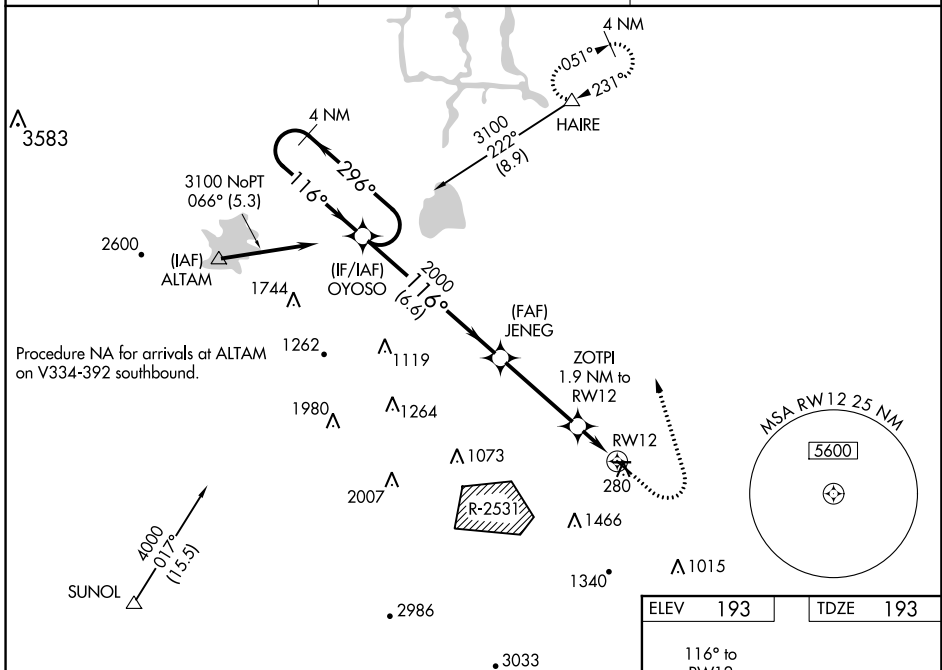
TRACY MUNI (TCY)

⚠ For uncompensated Baro-VNAV systems, LNAV/VNAV NA below -15°C (5°F) or above 54°C (130°F). Circling NA southwest of Rwy 12-30. Baro-VNAV and VDP NA when using Stockton altimeter setting. Circling Rwy 30 NA at night. Rwy 12 helicopter visibility reduction below 3/4 SM NA. DME/DME RNP-0.3 NA. When local altimeter setting not received, use Stockton altimeter setting: increase all DA to 507 and all visibilities 1/4 SM; increase all MDA 60 feet and LNAV Cat C visibility 1/8 SM.

⚠ NA

MISSED APPROACH:
Climb to 700 then
climbing left turn to
3200 direct HAIRE
and hold.

AWOS-3 118.375	NORCAL APP CON 123.85 278.3	UNICOM 123.075 (CTAF) 📻
--------------------------	---------------------------------------	--



CATEGORY	A	B	C	D
LPV DA	443-7/8	250 (300-7/8)		NA
LNAV/VNAV DA	447-7/8	254 (300-7/8)		NA
LNAV MDA	520-1	327 (400-1)		NA
📻 CIRCLING	580-1 387 (400-1)	660-1 467 (500-1)	660-1 1/2 467 (500-1 1/2)	NA

SW-2, 10 OCT 2019 to 07 NOV 2019

SW-2, 10 OCT 2019 to 07 NOV 2019