

VOR/DME MOD 114.6 Chan 93	APP CRS 263°	Rwy Idg 3438 TDZE 186 Apt Elev 193
---	------------------------	---

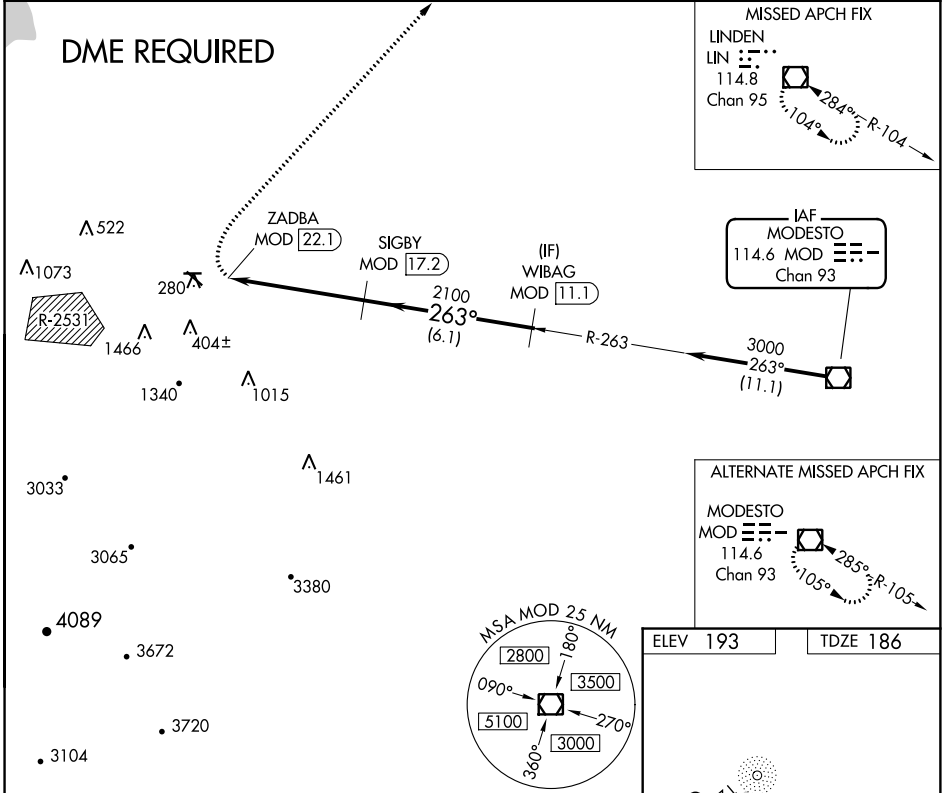
VOR RWY 26

TRACY MUNI (TCY)

⚠ Circling NA southwest of Rwy 12-30. Circling Rwy 30 NA at night. Rwy 26 helicopter visibility reduction below ¼ NA. DME Required. When local altimeter setting not received, use Stockton altimeter setting: increase all MDA 60 feet and Cat C visibility ½ SM.

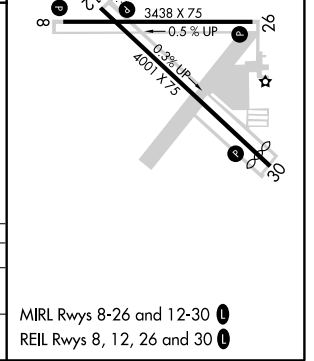
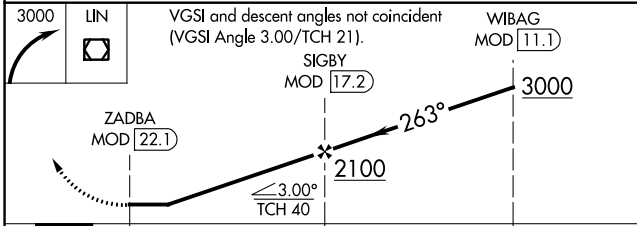
⚠ MISSED APPROACH: Climbing right turn to 3000 direct LIN VOR/DME and hold.

AWOS-3 118.375	NORCAL APP CON 123.85 278.3	UNICOM 123.075 (CTAF) 0
--------------------------	---------------------------------------	-----------------------------------



SW-2, 10 OCT 2019 to 07 NOV 2019

SW-2, 10 OCT 2019 to 07 NOV 2019



CATEGORY	A	B	C	D
S-26	760-1¼	574 (600-1¼)	760-1⅝ 574 (600-1⅝)	NA
C CIRCLING	760-1¼	567 (600-1¼)	760-1⅝ 567 (600-1⅝)	NA