

APP CRS	Rwy Idg	6498
182°	TDZE	3062
	Apt Elev	3062

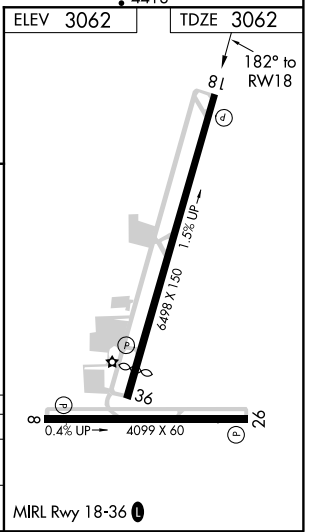
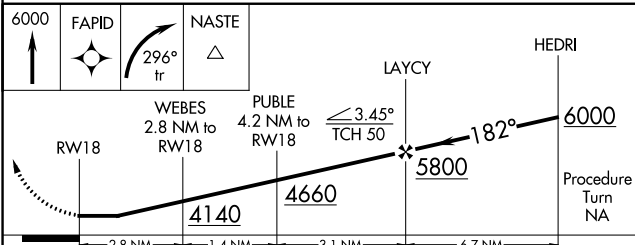
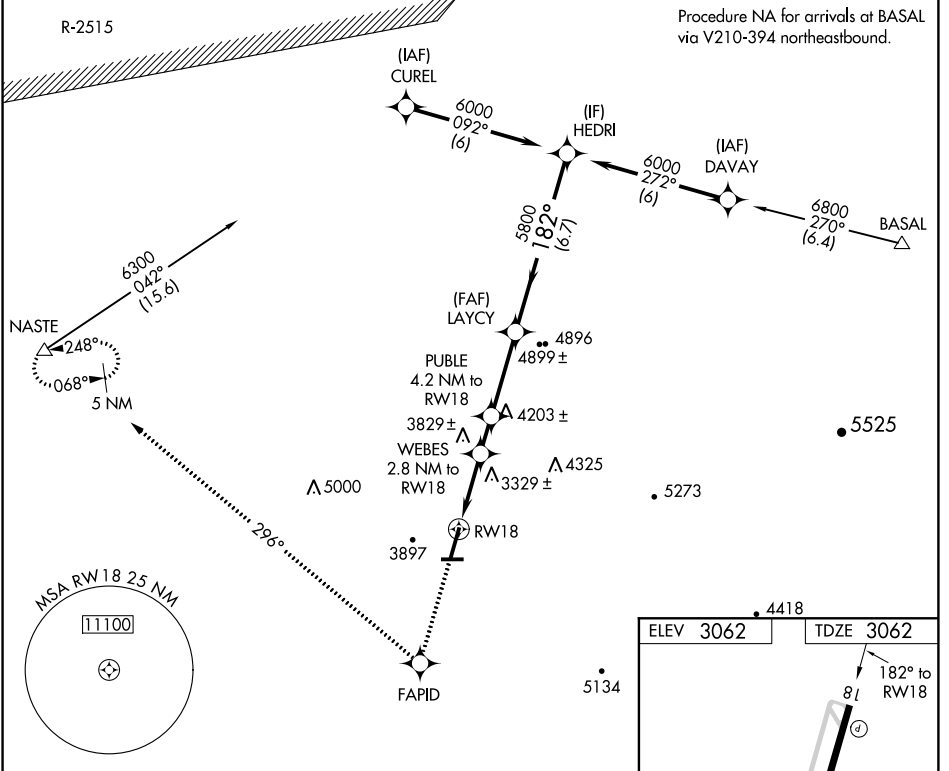
RNAV (GPS) Y RWY 18

APPLE VALLEY (APV)

NA Circling to Rwy 8 and 26 NA. DME/DME RNP-0.3 NA.
NA Helicopter visibility reduction below 1 SM NA.
 Use Southern California Logistics altimeter setting; if not received, procedure NA.

MISSED APPROACH: Climb to 6000 direct FAPID and right turn via 296° track to NASTE and hold.

SOUTHERN CALIFORNIA LOGISTICS AWOS-3 135.475	JOSHUA APP CON 124.55 363.0	AUNICOM ★ 122.8 (CTAF) 0
---	---------------------------------------	------------------------------------



CATEGORY	A	B	C	D
LNVA MDA	3700-1	638 (700-1)	3700-1¾	638 (700-1¾)
CIRCLING	4000-1 938 (1000-1)	4300-1 1238 (1300-1)	4320-3 1258 (1300-3)	4660-3 1598 (1600-3)

SW-3, 10 OCT 2019 to 07 NOV 2019

SW-3, 10 OCT 2019 to 07 NOV 2019